

# LMT100

## Magnetostrictive level transmitter

High accuracy liquid level and  
interface level detection  
K-TEK Level products

Measurement made easy

### Features

- High accuracy: 0.01% of full scale or  $\pm 1.27\text{mm}$
- Never requires re-calibration: set it & forget it
- Superior Sensor (Patent #5,473,245)
- Local indication with LCD display
- Dual compartment housing with separate field terminal compartment
- Loop powered to 22m (75ft) probe length
- Total and/or interface level measurement
- Pressure to 165.48 bar (2400 psig)  
Std. 124.1 bar (1800 psig)
- Temperature range:  $-195.5$  to  $426.6^{\circ}\text{C}$  ( $-320$  to  $800^{\circ}\text{F}$ )  
with options
- Field replaceable/upgradable electronics module
- Built-in RFI/EMI filter
- Digital communications

### Options

- Two level indications
- RTD for process temperature measurement
- Glass viewing window
- 316/L Stainless Steel enclosure
- 21-point linearization table



# SEITA

Soluciones en Instrumentación,  
Automatización y Control Industrial

[www.seita.com.co](http://www.seita.com.co)

Power and productivity  
for a better world™



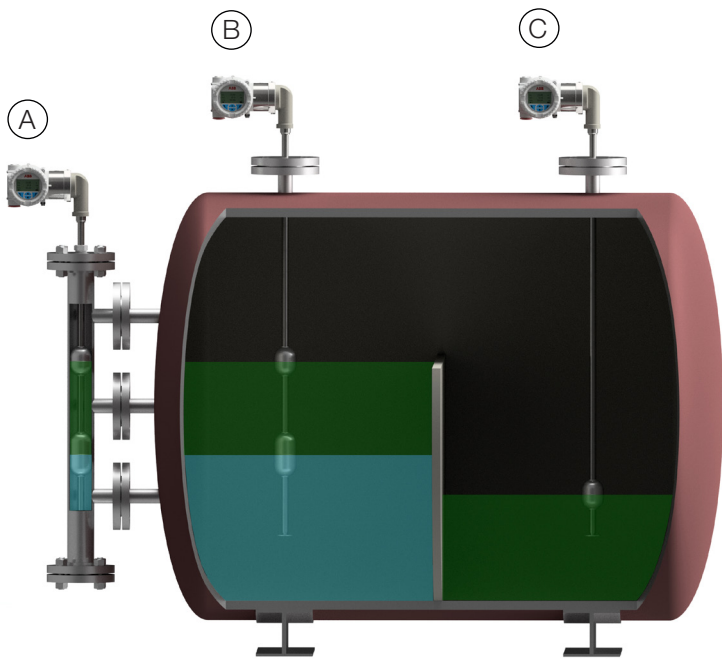
# LMT100

## Magnetostrictive level transmitter

### Principle of Operation:

The LMT100 is based upon the magnetostrictive principle.

1. The device electronics generates a low energy current pulse at fixed intervals.
2. The electrical pulses create a magnetic field which travels down a specialized wire inside the sensor tube.
3. The interaction of the magnetic field around the wire and the magnetic float causes a torsional stress wave to be induced in the wire. This torsion propagates along the wire at a known velocity, from the position of the magnetic float and toward both ends of the wire.
4. A patented sensing element placed in the transmitter assembly converts the received mechanical torsion into an electrical return pulse.
5. The microprocessor-based electronics measures the elapsed time between the start and return pulses (Time of Flight) and converts it into a position measurement which is proportional to the level of the float.

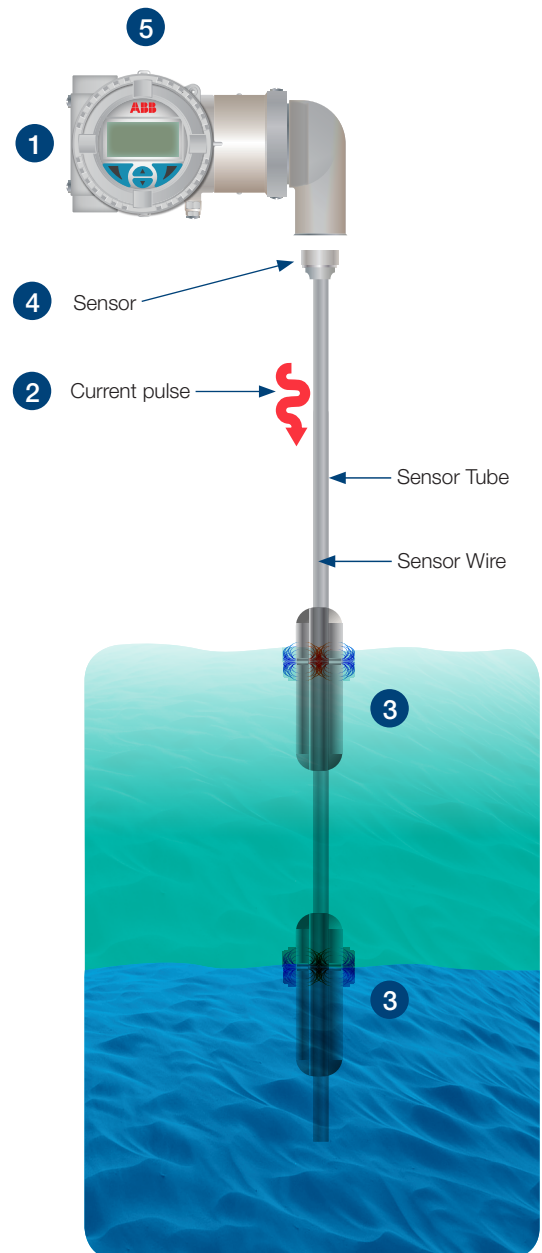


### LMT100 Transmitters installations:

- Installed in external chambers in a level and interface measurement application
- Installed directly into vessel, measuring level and interface level
- Installed directly into vessel measuring level only

### LMT100 is preferred for:

- Interface Measurement
- Exceptional performance with emulsion
- Measurement with foam on layers fluid surface
- Hydrocarbons and chemical control



# LMT100

## Magnetostrictive level transmitter

Specifications		
<b>Electronic transmitter:</b>		
Repeatability	± 0.005% of Full Scale or 0.305 mm (0.012 in), whichever is greater	
Non-linearity	± 0.01% of Full Scale or 0.864 mm (0.034in), whichever is greater	
Measuring accuracy	± 0.01% of Full Scale or 1.27 mm (0.050 in), whichever is greater <sup>1</sup>	
Supply voltage	12 to 42 Vdc - 4-20mA HART loop powered	
Output/Communications	4-20mA HART7®	
User Interface	Interactive display, DTM, EDDL with NE107 messaging	
Power consumption	4-20mA	at 36.0 Vdc - 3.6mA 0.13 watts; 21mA 0.76 watts at 12.0 Vdc - 3.6mA 0.043 watts; 21mA 0.25 watts
	HART mode (4.0mA)	at 36.0 Vdc 0.144 watts at 12.0 Vdc 0.048 watts
Maximum line resistance	4-20mA	at 36.0 Vdc and 21mA, 1142 ohms* at 24.0 Vdc and 21mA, 571 ohms at 12 Vdc and 21mA, < 72 ohms** <small>*Maximum allowable with HART® communication is 700 ohms **See the current/resistance chart</small>
	HART mode (4.0mA)	< 650 to 700 ohms
Polarity protection	4-20mA, Diode in series with loop, FOUNDATION Fieldbus and Profibus PA, polarity insensitive	
Update rate	10 measurements per second	
Minimum measuring span	76.2 mm (3.0 in), consult factory if smaller span is required	
Damping	Field Adjustable, Range: 0.1 to 60 seconds	
Alarm output	NE43, Software or Hardware selectable. Upscale (21 mA) or Downscale (3.6 mA)	
Surge Suppression	Integral surge suppression available with option code S1	
Ambient temperature	-40 to 85°C (-40 to 185°F) Ambient <sup>2</sup>	
Humidity	0 to 100% RH	
Linearization	21 Point Table Available	
Temperature sensor (optional)	1000 ohm Pt RTD, option code SER or STL	
Temperature tolerance class	IEC 60751 Class B, ± (0.3+0.005[t]), -70° to 230°C	
Enclosure	Dual Compartment	
Enclosure material	Cast Low Copper Aluminum with Powder Coat or 316 Stainless Steel	
Device tag material	AISI 316 Stainless Steel	
Electrical connection	Two M20 x 1.5 or two 1/2in. FNPT, adapters and bus connectors also available	
Ingress protection	IP66, NEMA 4X	

<sup>1</sup> Measurement accuracy is recorded at factory ambient conditions (23.88 °F +/-5.6 °C (75 °F +/-10 °F)) using a calibration magnet. Accuracy may be further influenced by other factors such as float hysteresis, installation, process conditions and ambient conditions.

<sup>2</sup> Some agency approvals may differ.

HART® is a registered trademark of the FieldComm Group

Sensor Tube		
	Standard	Options
Material	316/L Stainless Steel	Alloy 20, Hastelloy® C-276, FEP-TEFLON® jacketed, electropolished 316/316L Stainless Steel, others on request
Process temperature	-195.5 to 121.1°C (-320 to 250°F)	up to 427°C (800°F) with options
Process pressure	-1.0 to 124.1 bar @ 149°C (-14.7 to 1800 psig @ 300°F)	165.47 bar (2400 psig) maximum with the HP probe type
Probe length	304.8mm to 9.14m (1 to 30 ft)	22.86m (75ft) maximum w/ W7 flexible probe in sensor well
Probe length tolerance	± 3.2mm (0.125in) up to 3.0m (10ft); +/- 6.4mm (0.25in) up to 6.0m (20ft); ± 9.0mm (0.35in) up to 9.0m (29.5ft); +/- 25.4mm (1.0in) up to 22.86m (75ft)	
Mounting	3/4 in MNPT compression fitting	plugs, threaded fittings, loose flanges and welded flange process connections also available

# LMT100

## Magnetostrictive level transmitter



### HMI Indicator (Option)

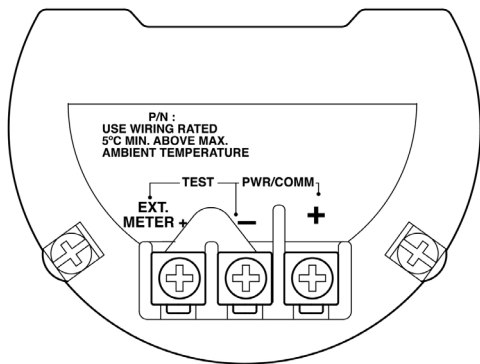
- Display of waveform for device performance confirmation
- Display of the current level as well as interface or the temperature of the measuring medium (optional)
- Application-specific visualizations which the user can select. Four operator pages can be configured to display multiple values in parallel
- Plain text fault diagnostics in conformance to NE107
- Menu-guided parameter settings with four buttons
- “Easy Set-up” function for fast commissioning
- Parameter settings of the device through the front glass with the housing closed
- During ongoing operation, the HMI Indicator can be connected or disconnected and therefore also used as a configuration tool for other devices

# LMT100

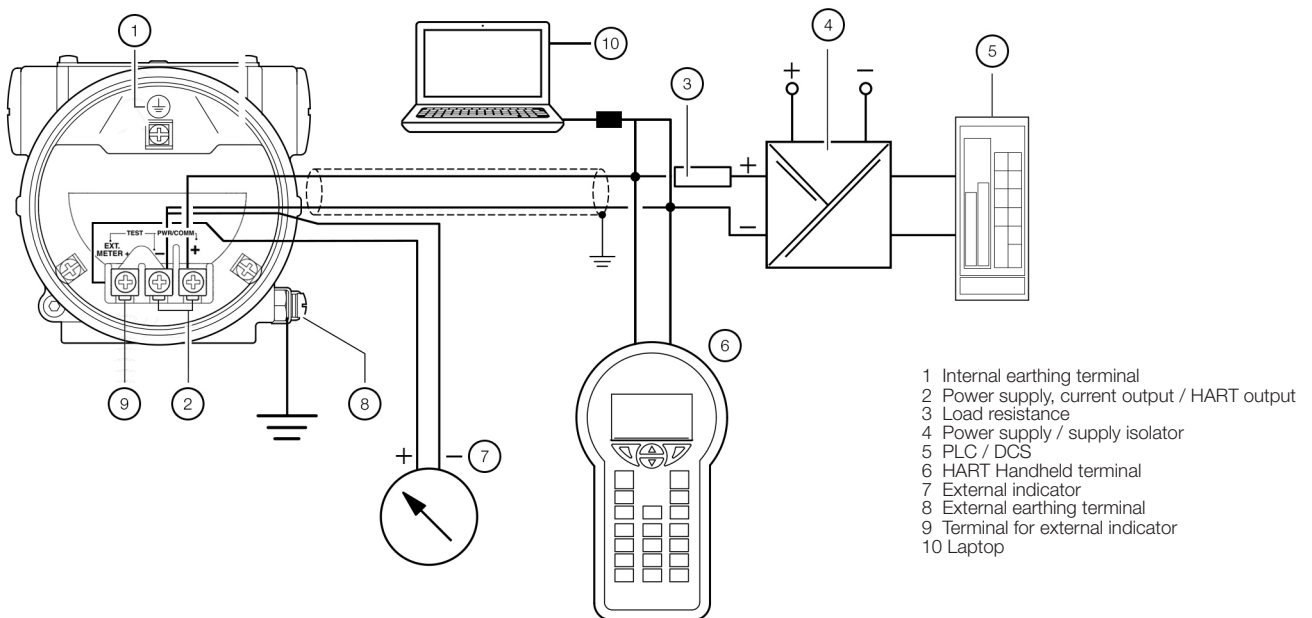
## Magnetostrictive level transmitter

### Electrical Connections

Devices with HART® communication  
Current output / HART® output



Terminal	Function / Comment
PWR/COMM +	Power supply, current output / HART® output
PWR/COMM -	HART® output
EXT. METER	Not assigned



- 1 Internal earthing terminal
- 2 Power supply, current output / HART output
- 3 Load resistance
- 4 Power supply / supply isolator
- 5 PLC / DCS
- 6 HART Handheld terminal
- 7 External indicator
- 8 External earthing terminal
- 9 Terminal for external indicator
- 10 Laptop

For connecting the signal voltage / supply voltage, twisted cables with a conductor cross-section of 18 ... 22 AWG / 0.8 ... 0.35 mm<sup>2</sup> and a maximum length of 1500 m (4921 ft.) must be used. For longer leads a greater cable cross section is required.

For shielded cables the cable shielding must only be grounded on one side (not on both sides).

For the earthing on the transmitter, the inner terminal with the corresponding marking can also be used.

The output signal (4 ...20 mA) and the power supply are conducted via the same conductor pair.

The transmitter works with a supply voltage between 12 ... 42 V DC. For devices with the type of protection "Ex ia, intrinsic safety" (ATEX, IEC, FM, and CSA approval), the supply voltage must not exceed 30 V DC. In some countries the maximum supply voltage is limited to lower values. The permissible supply voltage is specified on the name plate on the top of the transmitter.

# LMT100

## Magnetostrictive level transmitter

<b>Power Supply</b>	
<b>Devices with HART® communication</b>	
Terminals	PWR/COMM + / PWR/COMM -
Supply Voltage	12 ... 42 V DC
Residual Ripple	Maximum 5 % or $U_{ss} = \pm 1.5$ V
Power consumption	< 1 W

### Current Output / HART® Output

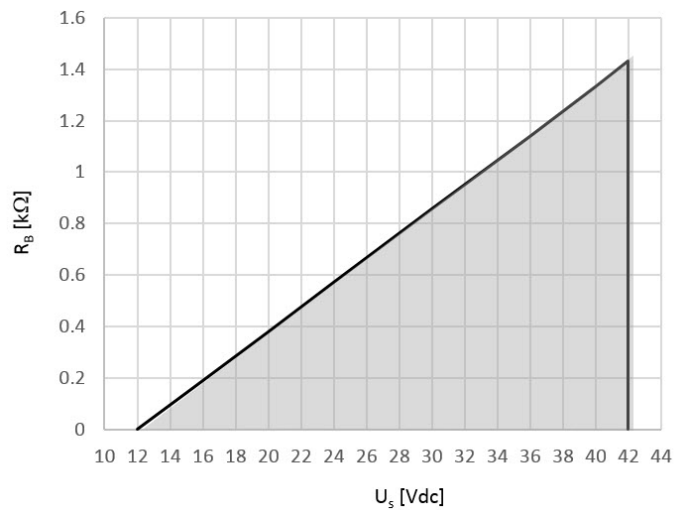
Only for devices with HART® communication

Terminals: PWR / COMM + / PWR / COMM -

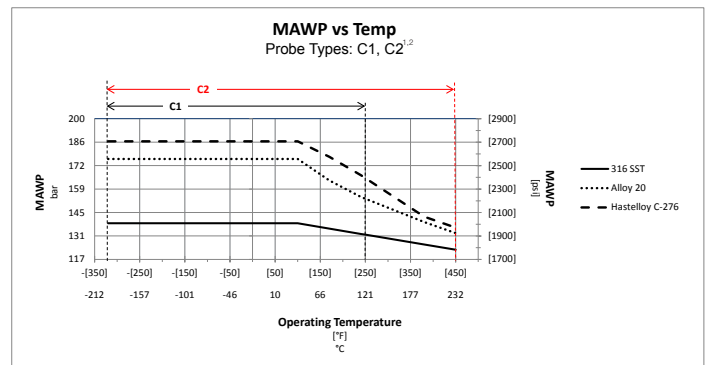
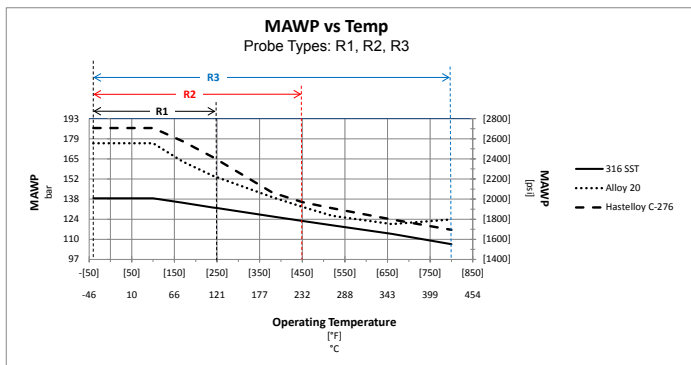
In HART® communication, the smallest load is  $R_B = 250 \Omega$ . The load is  $R_B$  is calculated as a function of the available supply voltage  $U_S$  and the selected signal current  $I_B$  as follows:

$$R_B = \frac{U_S - \text{min. operating voltage (12.0) Vdc}}{I_B}$$

$R_B$  Load Resistance  
 $U_S$  Supply Voltage  
 $I_B$  Maximum Signal current



### Probe Pressure / Temperature Charts

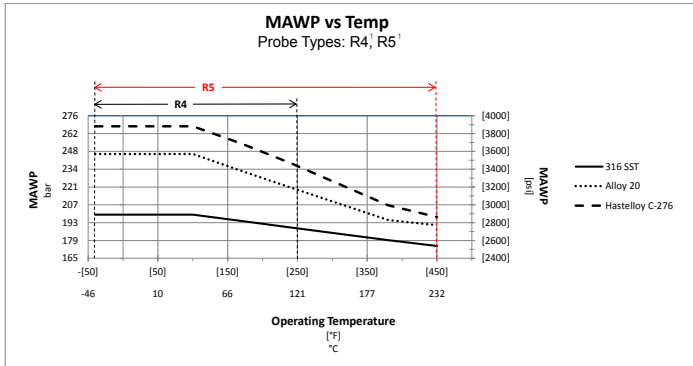


Note:  
 1. SEH option not available  
 2. With SEU wire option temperatures up to 219.4°C (427°F)

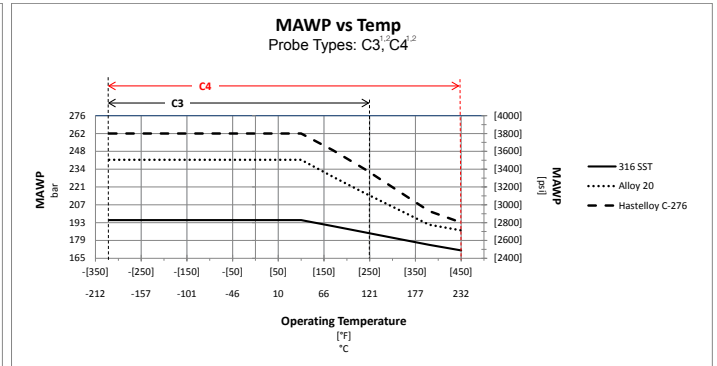
# LMT100

## Magnetostrictive level transmitter

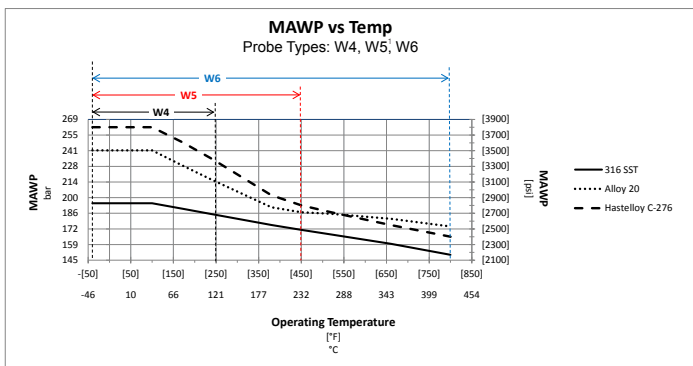
### Probe Pressure / Temperature Charts (continued)



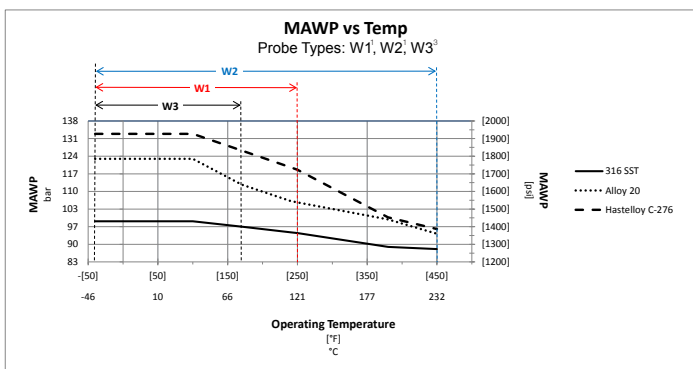
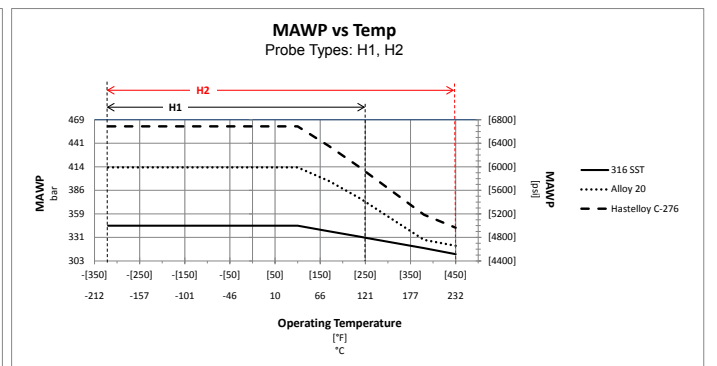
Note:  
1. SEH option not available



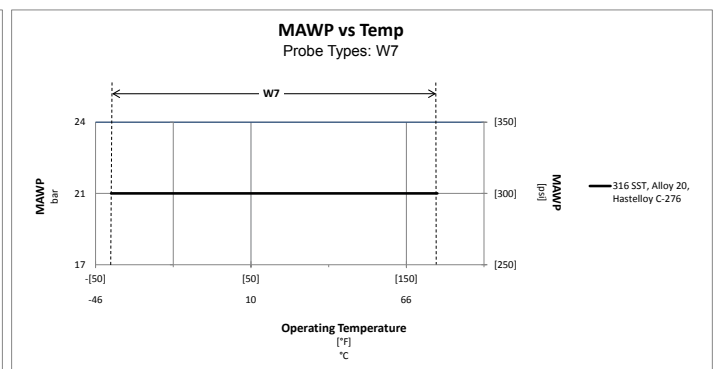
Note:  
1. SEH option not available  
2. With SEU wire option temperatures up to 219.4°C (427°F)



Note:  
1. SEH option not available



Note:  
1. SEH option not available  
3. Can be cleaned for a maximum of one hour at 149 °C (300 °F)



# LMT100

## Magnetostrictive level transmitter

Probe selection guide						
Probe Type	Probe Diameter	Maximum Insertion length	Minimum pressure	Maximum pressure	Minimum process temperature	Maximum process temperature
<b>Standard rigid probe</b>						
R1	16mm (5/8in)	9.14m (30ft)	-1.0 bar (-14.7 psig)	125.12 bar (1800 psig)	-40°C (40°F)	121°C (250°F)
R2						230°C (450°F)
R3						427°C (800°F)
<b>1/2 inch rigid probe</b>						
R4 <sup>2</sup>	13mm (1/2in)	6.1m (20ft)	-1.0 bar (-14.7 psig)	125.12 bar (1800 psig)	-40°C (40°F)	121°C (250°F)
R5 <sup>2</sup>						230°C (450°F)
<b>Cryogenic rigid probe with nitrogen purged sensor</b>						
C1	16mm (5/8 in)	9.14m (30ft)	-1.0 bar (-14.7 psig)	125.12 bar (1800 psig)	-195.6°C (-320°F)	121°C (250°F)
C2						230°C (450°F)
<b>Cryogenic sensor well with removable nitrogen purged stainless steel sensor</b>						
C3	27mm (1.05in) <small>*3/4" NPS Pipe</small>	9.14m (30ft)	-1.0 bar (-14.7 psig)	125.12 bar (1800 psig)	-195.6°C (-320°F)	121°C (250°F)
C4						230°C (450°F)
<b>High pressure rigid probe</b>						
H1 <sup>2</sup>	16mm (5/8in)	9.14m (30ft)	-1.0 bar (-14.7 psig)	166.5 bar (2400 psig)	-40°C (40°F)	121°C (250°F)
H2 <sup>2</sup>						230°C (450°F)
<b>FEP-TEFLON® jacketed rigid probe</b>						
J1	19mm (3/4in)	9.14m (30ft)	0.0 bar (0.0 psig)	4.46 bar (50 psig)	-40°C (40°F)	121°C (250°F)
J2						176.7°C (350°F)
<b>FEP-TEFLON® jacketed sensor well with removable stainless steel rigid sensor</b>						
J4 <sup>2</sup>	19mm (3/4in)	6.1m (20ft)	0.0 bar (0.0 psig)	4.46 bar (50 psig)	-40°C (40°F)	121°C (250°F)
J5 <sup>2</sup>						176.7°C (350 °F)
<b>Thermoplastic sensor well with removable stainless steel rigid sensor</b>						
T1 <sup>2</sup> , PVC	21.4mm (0.84in)	4.8m (16ft)	0.0 bar (0.0 psig)	4.46 bar (50 psig)	-40°C (40°F)	140°F (60°C)
T1 <sup>2</sup> , CPVC						98.9°C (210°F)
T1 <sup>2</sup> , PVDF						137.8°C (280°F)
<b>Metal sensor well with removable stainless steel rigid sensor</b>						
W1 <sup>2</sup>	16mm (5/8in)	9.14m (30 ft)	-1.0 bar (-14.7 psig)	90.64 bar (1300 psig)	-40°C (40°F)	121°C (250°F)
W2 <sup>2</sup>						230°C (450°F)

- Notes:  
 1. Can be cleaned for a maximum of one hour at 149 °C (300 °F)  
 2. Integral RTD (SER and STL options) not available on this probe design

TEFLON® (Registered trademark of DuPont)

# LMT100

## Magnetostrictive level transmitter

### Probe selection guide (continued)

Probe Type	Probe Diameter	Maximum Insertion length	Minimum pressure	Maximum pressure	Minimum process temperature	Maximum process temperature
------------	----------------	--------------------------	------------------	------------------	-----------------------------	-----------------------------

### Metal sensor well with removable flexible braided stainless steel sensor element

W3 <sup>1,2</sup>	16mm (5/8 in)	9.14m (30ft)	-1.0 bar (-14.7 psig)	90.64 bar (1300 psig)	-40°C (-40°F)	76.7°C (170°F)
-------------------	---------------	--------------	-----------------------	-----------------------	---------------	----------------

### Metal sensor well with removable stainless steel rigid sensor

W4	27mm (1.05in) *3/4" NPS Pipe	9.14m (30ft)	-1.0 bar (-14.7 psig)	132 bar (900 psig)	-40°C (-40°F)	121°C (250°F)
W5						230°C (450°F)
W6						427°C (800°F)

### Segmented sensor well with FEP flexible sensor element

W7 <sup>2</sup>	27mm (1.05in) *3/4" NPS Pipe	22.86m (75ft)	-1.0 bar (-14.7 psig)	21.7 bar (300 psig)	-26°C (-15°F)	77°C (170°F)
-----------------	---------------------------------	---------------	-----------------------	---------------------	---------------	--------------

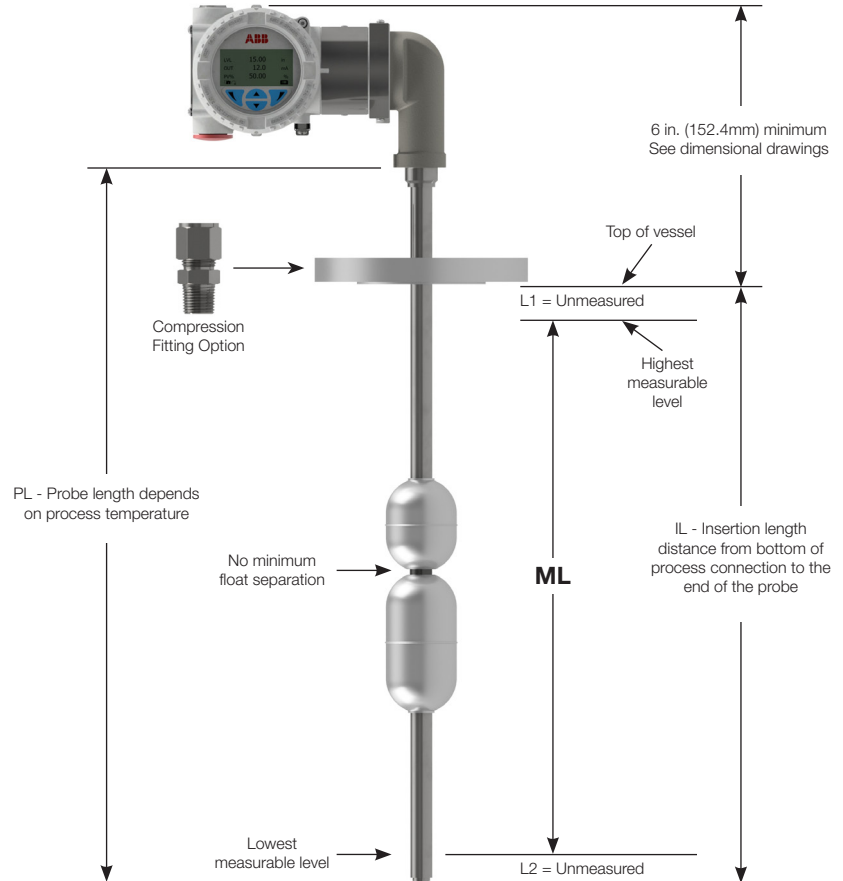
#### Notes:

1. Can be cleaned for a maximum of one hour at 300 °F (149 °C)
2. Integral RTD (SER and STL options) not available on this probe design

### L1 and L2 minimum unmeasurable distances \*

Probe Type	L1	L2
R1	25.4mm (1in)	133mm (5.25in)
R2	25.4mm (1in)	133mm (5.25in)
R3	25.4mm (1in)	133mm (5.25in)
R4	25.4mm (1in)	140mm (5.5in)
R5	25.4mm (1in)	140mm (5.5in)
C1	25.4mm (1in)	133mm (5.25in)
C2	25.4mm (1in)	133mm (5.25in)
C3	25.4mm (1in)	171mm (6.75in)
C4	25.4mm (1in)	171mm (6.75in)
H1	25.4mm (1in)	133mm (5.25in)
H2	25.4mm (1in)	133mm (5.25in)
J1	25.4mm (1in)	146mm (5.75in)
J2	25.4mm (1in)	146mm (5.75in)
J4	25.4mm (1in)	178mm (7in)
J5	25.4mm (1in)	178mm (7in)
W1	25.4mm (1in)	159mm (6.25in)
W2	25.4mm (1in)	159mm (6.25in)
W3	25.4mm (1in)	159mm (6.25in)
W4	25.4mm (1in)	171mm (6.75in)
W5	25.4mm (1in)	171mm (6.75in)
W6	25.4mm (1in)	171mm (6.75in)
W7 IL= 12.19m (40ft)	25.4mm (1in)	209.55mm (8.25in)
W7 IL= 22.86m (75ft)	25.4mm (1in)	330.2mm (13in)

\* Magnet placement and float length determine final dimensions. Custom designs are also available.



# LMT100

## Magnetostrictive level transmitter

LMT100 with 5/8 in. OD Sensor (Probe types - R1, R2, R3, H1, H2, C1, C2, W1, W2, W3)										
FLOAT No.	MAX. O.D.		MATERIAL	LENGTH		MIN. I.D.		MIN. CLEAN FLUID S.G.	MAX. PRESS.	
	inches	cm		inches	cm	inches	cm		psig	bar
01B	2.05	5.21	316 SS	2.67	6.78	0.7	1.78	0.71	350	24.1
02B	1.64	4.17	316 SS	1.42	3.61	0.71	1.8	1	200	13.8
05B	2.55	6.48	316 SS	7	17.78	0.8	2.03	0.71	560	38.6
06B	2.55	6.48	316 SS	11.5	29.21	0.8	2.03	0.73	600	41.4
07B	3.55	9.02	316 SS	5.92	15.04	0.8	2.03	0.49	575	39.6
08B	6.05	15.37	316 SS	5.94	15.09	0.8	2.03	0.33	600	41.4
15B	2.55	6.48	316 SS	7	17.78	0.7	1.78	0.52	330	22.8
17B	1.85	4.7	316 SS	2.93	7.44	0.7	1.78	0.78	350	24.1
18B	2.55	6.48	316 SS	7	17.78	0.96	2.44	0.63	330	22.8
29B	6	15.24	316 SS	5.81	14.76	1.46	3.71	0.4	600	41.4
401	2.55	6.48	316 SS	3.93	9.98	0.7	1.78	0.83	630	43.4
402	2.55	6.48	316 SS	5.43	13.79	0.7	1.78	0.73	630	43.4
41B	3.55	9.02	316 SS	3.44	8.74	0.7	1.78	0.55	800	55.2
09D	2	5.08	C-276	7.9	20.07	0.74	1.88	1.1	250	17.2
10D	3.55	9.02	C-276	5.93	15.06	0.74	1.88	0.55	520	35.9
11D	3.55	9.02	C-276	5.93	15.06	0.74	1.88	0.69	1350	93.1
17D	1.85	4.7	C-276	3	7.62	0.7	1.78	0.88	420	29
12F	2.88	7.32	CPVC	4	10.16	1.25	3.18	0.77	50	3.4
19F	1.88	4.78	CPVC	6	15.24	0.75	1.91	0.77	50	3.4
56F	1.88	4.78	CPVC	6	15.24	0.89	2.26	0.9	50	3.4
12E	2.88	7.32	PVC	4	10.16	1.25	3.18	0.7	50	3.4
19E	1.88	4.78	PVC	6	15.24	0.75	1.91	0.7	50	3.4
59E	2.38	6.03	PVC	13	33.02	1.26	3.2	0.61	15	1
14G	2.38	6.03	PVDF	4	10.16	1.19	3.02	0.85	50	3.4
55G	2.38	6.03	PVDF	4	10.16	0.88	2.24	0.68	50	3.4
52P	2.38	6.03	TEFLON® (PFA) <sup>1</sup>	4	10.16	0.89	2.26	0.94	50	3.4
53P	1.88	4.78	TEFLON® (PFA) <sup>1</sup>	6	15.24	0.81	2.06	1.06	50	3.4
210	2.55	6.48	TITANIUM*	8.1	20.58	1.46	3.71	0.65	75	5.2
231	2.55	6.48	TITANIUM*	5.44	13.82	0.7	1.78	0.45	700	48.3
232	2.55	6.48	TITANIUM*	8.44	21.44	0.7	1.78	0.42	700	48.3
233	2.55	6.48	TITANIUM*	11.44	29.06	0.7	1.78	0.4	700	48.3
241	2.55	6.48	TITANIUM*	8.44	21.44	0.7	1.78	0.41	350	24.1
251	2.55	6.48	TITANIUM*	3.94	10.01	0.7	1.78	0.47	575	39.6
252	2.55	6.48	TITANIUM*	5.44	13.82	0.7	1.78	0.43	575	39.6
253	2.55	6.48	TITANIUM*	6.94	17.63	0.7	1.78	0.41	575	39.6
254	2.55	6.48	TITANIUM*	8.44	21.44	0.7	1.78	0.39	575	39.6
255	2.55	6.48	TITANIUM*	9.94	25.25	0.7	1.78	0.38	575	39.6
261	1.88	4.78	TITANIUM*	4.21	10.69	0.7	1.78	0.58	250	17.2

TEFLON® (Registered trademark of DuPont)

# LMT100

## Magnetostrictive level transmitter

LMT100 with 5/8 in. OD Sensor (Probe types - R1, R2, R3, H1, H2, C1, C2, W1, W2, W3)										
FLOAT No.	MAX. O.D.		MATERIAL	LENGTH		MIN. I.D.		MIN. CLEAN FLUID S.G.	MAX. PRESS.	
	inches	cm		inches	cm	inches	cm		psig	bar
262	1.88	4.78	TITANIUM*	7.21	18.31	0.7	1.78	0.48	250	17.2
263	1.88	4.78	TITANIUM*	10.21	25.93	0.7	1.78	0.44	250	17.2
271	1.88	4.78	TITANIUM*	2.71	6.88	0.7	1.78	0.76	450	31
272	1.88	4.78	TITANIUM*	4.21	10.69	0.7	1.78	0.61	450	31
273	1.88	4.78	TITANIUM*	5.71	14.5	0.7	1.78	0.54	450	31
274	1.88	4.78	TITANIUM*	7.21	18.31	0.7	1.78	0.5	450	31
275	1.88	4.78	TITANIUM*	8.71	22.12	0.7	1.78	0.48	450	31
281	1.5	3.81	TITANIUM*	3.6	9.14	0.7	1.78	0.87	100	6.9
282	1.5	3.81	TITANIUM*	6.6	16.76	0.7	1.78	0.69	100	6.9
283	1.5	3.81	TITANIUM*	9.6	24.38	0.7	1.78	0.63	100	6.9
291	2.55	6.48	TITANIUM*	5.4	13.72	0.95	2.41	0.55	700	48.3
45T	2.55	6.48	TITANIUM*	10.67	27.1	0.74	1.88	0.75	2400	165.5
461	2.55	6.48	TITANIUM*	3.93	9.98	0.7	1.78	0.52	1000	68.9
462	2.55	6.48	TITANIUM*	5.43	13.79	0.7	1.78	0.48	1000	68.9
463	2.55	6.48	TITANIUM*	6.93	17.6	0.7	1.78	0.46	1000	68.9
471	2.55	6.48	TITANIUM*	3.33	8.46	0.9	2.29	0.73	1350	93.1
472	2.55	6.48	TITANIUM*	4.33	11	0.9	2.29	0.68	1350	93.1
473	2.55	6.48	TITANIUM*	5.33	13.54	0.9	2.29	0.66	1350	93.1
481	2.55	6.48	TITANIUM*	3.94	10.01	0.7	1.78	0.43	225	15.5
60T	5	12.7	TITANIUM*	4.85	12.32	0.93	2.36	0.33	900	62.1
LMT100 with 3/4 in. & 1 in. (Probe types - C3, C4, W4, W5, W6, W7)										
210	2.55	6.48	TITANIUM*	8.1	20.57	1.46	3.71	0.65	75	5.2
61T	5	12.7	TITANIUM*	4.75	12.07	1.46	3.71	0.43	900	62.1
29B	6	15.24	316 SS	5.81	14.76	1.46	3.71	0.36	600	41.4
51B	6	15.24	316 SS	5.8	14.73	1.77	4.50	0.5	400	27.6
58B	3.5	8.89	316 SS	5.69	14.45	1.46	3.71	0.67	575	39.6
LMT100 with 1/2 in. OD Sensor (Probe Types - R4, R5)										
20D	3.55	9.02	C-276	6	15.24	0.68	1.72	0.49	520	35.9
22D	2.55	6.48	C-276	8.5	21.59	0.65	1.65	0.74	150	10.3
53G	1.88	4.78	PVDF	6	15.24	0.81	2.06	0.85	50	3.4
54G	2.38	6.03	PVDF	4	10.16	0.81	2.06	0.67	50	3.4

\*Titanium pressure ratings are valid to 100 °F. For higher temperatures, multiply the Titanium pressure ratings by the factors listed to determine revised ratings:

65.6°C (150°F) = 0.84      93.3°C (200°F) = 0.74      121.1°C (250°F) = 0.64      148.9°C (300°F) = 0.55      176.7°C (350°F) = 0.48  
 204.4°C (400°F) = 0.42      232.2°C (450°F) = 0.35      260.0°C (500°F) = 0.34      287.8°C (550°F) = 0.30      315.6°C (600°F) = 0.28

Floats can be supplied with coatings for corrosion resistance and resistance to build-up. Consult Factory

# LMT100

## Magnetostrictive level transmitter

### Approvals

#### Flameproof marking

- ATEX/IECEX
  - II 1/2 G Ex db IIC T6..T2 Ga/GbFM15ATEX0074X
  - IECEX FME150011X Power Supply 42 Vdc/2W Max
- FM (C and US) approved
  - CLI Zone 1, AEx/Ex db IIC T6...T2 Gb
  - US - CLI GP ABCD, T6...T2
  - Canada - CLI GP BCD, T6...T2

#### Protection by enclosure marking

- ATEX/IECEX
  - II 2 D Ex tb IIIC T85°C...T300°C Db FM15ATEX0074X
  - IECEX FME150011X Power Supply 42 Vdc/2W Max
- FM (C and US) approved
  - Zone 21 AEx/Ex tb IIIC T80°C...T165°C Db
  - US - CLII GP EFG, CLIII T6...T2
  - Canada - CLII GP EFG, CLIII T6...T2

#### Intrinsic / Non-Incendive marking

- ATEX/IECEX
  - II 1 G Ex ia IIC T6...T4 Ga
  - II 1 D Ex ia IIIC T80°C Da;
  - FM15ATEX0072X - IECEX FME150011X
  - II 3 G Ex ic IIC T6..T4 Gc
  - II 3 D Ex ic IIIC T80°C Dc
  - II 3 G Ex nA IIC T6..T4 Gc
  - FM15ATEX0073X - IECEX FME150011X
- FM (C and US) approved
  - CLI DIV1/GP ABCD, CLII/DIV1/GP EFG, CLIII;
  - CLI ZONE 0 AEx/Ex ia IIC T6...T4 Ga;
  - Zone 20 AEx ia IIIC T80°C; CLII/III DIV1 Ex ia IIIC T80°C;
  - CLI/DIV2/GP ABCD; CLII/DIV2/GP FG; CLIII;
  - CLI ZONE 2, AEx nC IIC T6...T4;
  - CLI ZONE 2, Ex nL IIC T6...T4;
  - per 3KXL140000G0109

### Example of Code:

**LMT100.M1.S6.R1.A1.P1.NT.B.N.S6.D1.L2.H1.51B.99Z - SER.TS.AR // CN.R5.M5 IL=1234.12mm**

Base Model (Continued)		
<b>LMT100 Insertion Transmitter</b>	<b>LMT100.....X- ...//</b>	XX XX
<b>Approvals</b>		
General Purpose		Y0
ATEX / IECEX Intrinsic Safety		E1
ATEX / IECEX Flameproof housing		E2
ATEX / IECEX Flameproof Non-Sparking (Ex nA)		E3
ATEX / IECEX Ex ic Category 3		E8
Multi-Approval - North American (meeting FM and Canadian Standards) / ATEX / IECEX Explosion Proof or Flameproof, Intrinsic Safety or Non-Sparking (Protection Type marked by Customer)		M1
North American Intrinsic Safety		N1
North American (meeting FM and Canadian Standards) Explosion Proof / Flameproof		N2
North American (meeting FM and Canadian Standards) Non-Incendive / Non-Sparking		N3
North American (meeting FM and Canadian Standards) Ex ic		N8
Others		Z9
<b>Probe Wetted Material</b>		
No wetted parts, no sensor well		Y0
316/L SS		S6
Hastelloy® C-276		H1
Alloy 20		A2
TEFLON® Jacketed		P1
PVDF (KYNAR®)		P2
Special		Z9

TEFLON® (Registered trademark of DuPont)

Hastelloy® (Registered trade mark of Haynes International, Inc.)

# LMT100

## Magnetostrictive level transmitter

### Example of Code:

**LMT100.M1.S6.R1.A1.P1.NT.B.N.S6.D1.L2.H1.51B.99Z - SER.TS.AR // CN.R5.M5 IL=1234.12mm**

Base Model (Continued)			
LMT100 Insertion Transmitter	LMT100.....x-	XX	XX
<b>Probe Style and Probe Type</b>			
5/8 in. Rigid Probe, 1.0 to 125 bar (-14.7 to 1800 psig), -40 to 121°C (-40 to 250°F)			R1
5/8 in. Rigid Probe, 1.0 to 125 bar (-14.7 to 1800 psig), -40 to 230°C (-40 to 450°F)			R2
5/8 in. Rigid Probe, 1.0 to 125 bar (-14.7 to 1800 psig), -40 to 427°C (-40 to 800°F)			R3
1/2 in. Rigid Probe, 1.0 to 125 bar (-14.7 to 1800 psig), -40 to 121°C (-40 to 250°F)			R4
1/2 in. Rigid Probe, 1.0 to 125 bar (-14.7 to 1800 psig), -40 to 230°C (-40 to 450°F)			R5
5/8 in. Rigid Probe for Cryo Services, 1.0 to 125 bar (-14.7 to 1800 psig), -195.6 to 121°C (-320 to 250°F), with Vapor Seal			C1
5/8 in. Rigid Probe for Cryo Services, 1.0 to 125 bar (-14.7 to 1800 psig), -195.6 to 230°C (-320 to 450°F), with Vapor Seal			C2
3/4 in. NPS (26.67mm / 1.05 in OD) Sensor Well with 5/8 in. Rigid Probe for Cryo Services, -1.0 to 125.12 bar (-14.7 to 1800 psig), -195.6 to 121°C (-320 to 250°F), with Vapor Seal			C3
3/4 in. NPS (26.67mm / 1.05 in OD) Sensor Well with 5/8 in. Rigid Probe for Cryo Services, -1.0 to 125.12 bar (-14.7 to 1800 psig), -195.6 to 230°C (-320 to 450°F), with Vapor Seal			C4
5/8 in. High Pressure Probe, -1.0 to 166.5 bar (-14.7 to 2400 psig), -40 to 121 C (-40 to 250F)			H1
5/8 in. High Pressure Probe, -1.0 to 166.5 bar (-14.7 to 2400 psig), -40 to 230 C (-40 to 450F)			H2
3/4 in. PFA TEFLON® Jacketed Rigid Probe, 0.0 to 4.46 bar (0 to 50 psig), -40 to 121°C (-40 to 250°F)			J1
3/4 in. PFA TEFLON® Jacketed Rigid Probe, 0.0 to 4.46 bar (0 to 50 psig), -40 to 250°C (-40 to 350°F)			J2
3/4 in. PFA TEFLON® Jacketed Sensor Well with 1/2 in. Rigid Probe, 0.0 to 4.46 bar (0 to 50 psig), -40 to 121°C (-40 to 250°F)			J4
3/4 in. PFA TEFLON® Jacketed Sensor Well with 1/2 in. Rigid Probe, 0.0 to 4.46 bar (0 to 50 psig), -40 to 176.7°C (-40 to 350°F)			J5
5/8 in. Sensor Well with 1/2 in. Rigid Probe, -1.0 to 90.64 bar (-14.7 to 1300 psig), -40 to 121°C (-40 to 250°F), with Vapor Seal			W1
5/8 in. Sensor Well with 1/2 in. Rigid Probe, -1.0 to 90.64 bar (-14.7 to 1300 psig), -40 to 230°C (-40 to 450°F), with Vapor Seal			W2
5/8 in. Sensor Well with 1/2 in. Flexible Stainless Steel Braided Probe, 0.013 to 90.64 bar (-14.7 to 1300 psig) -40 to 76.7°C (-40 to 170°F)			W3 <sup>1</sup>
3/4 in. NPS (26.67mm / 1.05 in OD) Sensor Well with 5/8 in. Rigid Probe, -1.0 to 132 bar (-14.7 to 1900 psig), -40 to 121°C (-40 to 250°F)			W4
3/4 in. NPS (26.67mm / 1.05 in OD) Sensor Well with 5/8 in. Rigid Probe, -1.0 to 132 bar (-14.7 to 1900 psig), -40 to 230°C (-40 to 450°F)			W5
3/4 in. NPS (26.67mm / 1.05 in OD) Sensor Well with 5/8 in. Rigid Probe, -1.0 to 132 bar (-14.7 to 1900 psig), -40 to 427°C (-40 to 800°F)			W6
1 in. Segmented Sensor Well with Flexible TEFLON® Sensor Probe, -1.0 to 21.7 bar (-14.7 to 300 psig), -26 to 77°C (-15 to 170°F) (Viton O-Rings Standard)			W7 <sup>1</sup>
Special			Z9

Notes:  
 1. Not available with M1, E2, N2 approval codes  
 TEFLON® (Registered trademark of DuPont)

# LMT100

## Magnetostrictive level transmitter

### Example of Code:

**LMT100.M1.S6.R1.A1.P1.NT.B.N.S6.D1.L2.H1.51B.99Z - SER.TS.AR // CN.R5.M5 IL=1234.12mm**

Base Model (Continued)					
LMT100 Insertion Transmitter	LMT100.....x-	xx	xx	xx	x
<b>Probe End Connection</b>					
None		Y0			
Retaining Clip		A1			
Centering Disk, O.D. 1	Minimum Stilling Well Size				
38.1mm (1.5in)	1.5" sch. 40	C1			
50.8mm (2.0in)	2" sch. 40	C2			
58.42mm (2.3in)	2.5" sch. 40	C3			
73.025mm (2.875in)	3" sch. 80	C4			
95.25mm (3.75in)	4" sch. 80	C6			
Special		Z9			
<b>Process Connection Style</b>					
None			Y0		
Compression Fitting			P1		
Welded Process Connection			P2		
Loose Process Connection			P3		
Special			Z9		
<b>Process Connection Type</b>					
None				YY	
ANSI / ASME RTJ				AJ	
ANSI / ASME Raised Face				AR	
British Pipe Thread (BSPP) G Thread				GT	
NPT				NT	
DIN Raised Face				DR	
Fisher Displacer Flange 249B				FB	
Fisher Displacer Flange 249C				FC	
Fisher Displacer Flange 249N				FN	
Masonellan Displacer Flange				MD	
Special				ZZ	
<b>Process Connection Size</b>					
None					Y
DN 15 / ANSI 1/2 in.					A
DN 20 / ANSI 3/4 in.					B
DN 25 / ANSI 1 in.					C
DN 32 / ANSI 1-1/4 in.					D
DN 40 / ANSI 1-1/2 in.					E
DN 50 / ANSI 2 in.					F
DN 65 / ANSI 2-1/2 in.					G
DN 80 / ANSI 3 in.					H
DN 100 / ANSI 4 in.					J
Special					Z

# LMT100

## Magnetostrictive level transmitter

### Example of Code:

**LMT100.M1.S6.R1.A1.P1.NT.B.N.S6.D1.L2.H1.51B.99Z - SER.TS.AR // CN.R5.M5 IL=1234.12mm**

Base Model (Continued)									
LMT100 Insertion Magnetostrictive Transmitter LMT100.....X-	XX	XXX	XXX	XXX	X	XX	XX	XX	XX
<b>Process Connection Pressure Rating</b>									
None					Y				
PN 25 / ANSI 150					D				
PN 40 / ANSI 300					E				
PN 63					F				
PN 100 / ANSI 600					G				
PN 160 / ANSI 900					H				
PN 250 / ANSI 1500					J				
Compression fitting or threaded connection					N				
Special					Z				
<b>Process Connection Material</b>									
No wetted parts, no sensor well						Y0			
316/L SS						S6			
Hastelloy® C-276						H1			
Carbon Steel						C1			
TEFLON® jacketed flange or TEFLON® compression fitting						P1			
PVDF (KYNAR®)						P2			
Special						Z9			
<b>Housing</b>									
None (For sensor well replacement only)							Y0		
Aluminum with 2 x M20 x 1.5							D1		
Aluminum with 2 x NPT 1/2 in.							D2		
Stainless Steel with 2 x M20 x 1.5							D3		
Stainless Steel with 2 x NPT 1/2 in.							D4		
Special							Z9		
<b>Display</b>									
No Display, with Blind Cover								L0	
With through the glass (TTG) Push Buttons and Display and Glass Cover								L2	
Special								Z9	
<b>Output</b>									
None (For sensor well replacement only)									Y0
Single 4 ... 20 mA + HART									H1
Special									Z9

TEFLON® (Registered trademark of DuPont)  
Hastelloy® (Registered trade mark of Haynes International, Inc.)

# LMT100

## Magnetostrictive level transmitter

### Example of Code:

LMT100.M1.S6.R1.A1.P1.NT.B.N.S6.D1.L2.H1.51B.99Z - SER.TS.AR // CN.R5.M5

IL=1234.12mm

Base Model (continued)						
LMT100 Insertion Transmitter LMT100.....X-						XXX
Float 1 Option *See selection guide on page 10 and 11 of this data sheet						
None (Replacement sensor well)						00Y
No Float, Replacement sensor without float with level measurement						00R
Special Custom or interface float (consult factory)						99Z
FLOAT No.	MAX O.D.		MATERIAL	LENGTH		
	Inches	cm		Inches	cm	
F21T	2.55	6.48	TITANIUM	8.1	20.57	210
F23T1	2.55	6.48	TITANIUM	5.44	13.82	231
F23T2	2.55	6.48	TITANIUM	8.44	21.44	232
F23T3	2.55	6.48	TITANIUM	11.44	29.06	233
F24T1	2.55	6.48	TITANIUM	8.44	21.44	241
F25T1	2.55	6.48	TITANIUM	3.94	10.01	251
F25T2	2.55	6.48	TITANIUM	5.44	13.82	252
F25T3	2.55	6.48	TITANIUM	6.94	17.63	253
F25T4	2.55	6.48	TITANIUM	8.44	21.44	254
F25T5	2.55	6.48	TITANIUM	9.94	25.25	255
F26T1	1.88	4.78	TITANIUM	4.21	10.69	261
F26T2	1.88	4.78	TITANIUM	7.21	18.31	262
F26T3	1.88	4.78	TITANIUM	10.21	25.93	263
F27T1	1.88	4.78	TITANIUM	2.71	6.88	271
F27T2	1.88	4.78	TITANIUM	4.21	10.69	272
F27T3	1.88	4.78	TITANIUM	5.71	14.50	273
F27T4	1.88	4.78	TITANIUM	7.21	18.31	274
F27T5	1.88	4.78	TITANIUM	8.71	22.12	275
F28T1	1.5	3.81	TITANIUM	3.6	9.14	281
F28T2	1.5	3.81	TITANIUM	6.6	16.76	282
F28T3	1.5	3.81	TITANIUM	9.6	24.38	283
F29T1	2.55	6.48	TITANIUM	5.4	13.71	291
F40B1	2.55	6.48	316 SS	3.93	9.98	401
F40B2	2.55	6.48	316 SS	5.43	13.79	402
F46T1	2.55	6.48	TITANIUM	3.93	9.98	461
F46T2	2.55	6.48	TITANIUM	5.43	13.79	462
F46T3	2.55	6.48	TITANIUM	6.93	17.60	463
F47T1	2.55	6.48	TITANIUM	3.33	8.46	471
F47T2	2.55	6.48	TITANIUM	4.33	10.99	472
F47T3	2.55	6.48	TITANIUM	5.33	13.53	473
F48T1	2.55	6.48	TITANIUM	3.94	10.01	481
F1B	2.05	6.48	316 SS	2.67	6.78	01B

# LMT100

## Magnetostrictive level transmitter

### Example of Code:

**LMT100.M1.S6.R1.A1.P1.NT.B.N.S6.D1.L2.H1.51B.99Z - SER.TS.AR // CN.R5.M5 IL=1234.12mm**

Base Model (continued)						
LMT100 Insertion Magnetostrictive Transmitter LMT100.....x-						XXX
Float 1 Option (continued) *See selection guide on page 10 and 11 of this data sheet						
FLOAT No.	MAX O.D.		MATERIAL	LENGTH		
	inches	cm		Inches	cm	
F2B	1.64	4.17	316 SS	1.42	3.61	02B
F5B	2.55	6.48	316 SS	7	17.78	05B
F6B	2.55	6.48	316 SS	11.5	29.21	06B
F7B	3.55	9.02	316 SS	5.92	15.04	07B
F8B	6.05	15.37	316 SS	5.94	15.09	08B
F9D	2	5.08	C-276	7.9	20.07	09D
F10D	3.55	9.02	C-276	5.93	15.06	10D
F11D	3.55	9.02	C-276	5.93	15.06	11D
F12E	2.88	7.32	PVC	4	10.16	12E
F12F	2.88	7.32	CPVC	4	10.16	12F
F14G	2.38	7.32	PVDF	4	10.16	14G
F15B	2.55	6.48	316 SS	2.55	6.48	15B
F17B	1.85	4.7	316 SS	1.85	4.70	17B
F18B	2.55	6.48	316 SS	2.55	6.48	18B
F19E	1.88	4.78	PVC	6	15.24	19E
F19F	1.88	4.78	CPVC	6	15.24	19F
F20D	3.55	9.02	C-276	3.55	9.02	20D
F22D	2.55	6.48	C-276	2.55	6.48	22D
F29B	6	15.24	316 SS	6	15.24	29B
F30B	2.31	5.87	316 SS	2.31	5.87	30B
F31B	1.85	4.7	316 SS	1.85	4.70	31B
F41B	3.55	9.02	316 SS	3.55	9.02	41B
F45T	10.67	27.10	TITANIUM	10.67	27.10	45T
F50B	7.5	19.05	316 SS	7.5	19.05	50B
F50BDM	7.5	19.05	316 SS	7.5	19.05	50M
F51B	6	15.24	316 SS	6	15.24	51B
F52P	2.38	6.05	TEFLON® (PFA)	2.38	6.05	52P
F53G	1.88	4.78	PVDF	1.88	4.78	53G
F53P	1.88	4.78	TEFLON® (PFA)	1.88	4.78	53P
F54G	2.38	6.03	PVDF	4	10.16	54G
F55G	2.38	6.03	PVDF	4	10.16	55G
F56F	1.88	4.78	CPVC	6	15.24	56F
F58B	3.5	8.89	316 SS	5.69	14.45	58B
F59E	2.38	6.05	PVC	13	33.02	59E
F60T	5	12.7	TITANIUM	4.85	12.32	60T
F61T	5	12.7	TITANIUM	4.75	12.07	61T

# LMT100

## Magnetostrictive level transmitter

### Example of Code:

**LMT100.M1.S6.R1.A1.P1.NT.B.N.S6.D1.L2.H1.51B.99Z - SER.TS.AR // CN.R5.M5 IL=1234.12mm**

The following codes behind the hyphen (-) are options which affect the construction and tagging of the transmitter.

Base Model (continued)	
<b>LMT100 Insertion Transmitter</b> LMT100.....X-	xxx
<b>Float 2 Option</b>	
None (Replacement sensor well)	00Y
No Float, Replacement sensor without float with level measurement	00R
Special	99Z

The following codes behind the hyphen (-) are options which affect the construction and tagging of the transmitter.

Options			
<b>LMT100 Insertion Transmitter</b> LMT100.....X-xxx.xxx...	xxx	xx(x)	xx
<b>Additional Approvals or Certifications</b>			
Furnished with CRN data package (includes tagging, MTR and hydro tests)	CRN		
<b>Sensor probe options</b>			
Add high temperature wire to Cryogenic or SEH probes		SEU	
90 degree bend housing extension (max length 7.62m / 25ft)		SEH	
Electropolish Finish (316/L only)		SEL	
Add Teflon sleeve to probe for stick resistance only, not for corrosion resistance (max temp 176.7°C / 80.4°F); Maximum probe length (7.6mm / 25ft)		SEN <sup>1</sup>	
240 Grit Polish (316/L only)		SEP	
Add RTD Temperature sensor		SER	
Custom placement of RTD in sensor probes equipped with temperature option (distance from L1 must be specified), typically RTD placement is 82.55mm (3.25in) from the end of the sensor		STL	
Add Nitrogen purged vapor seal to standard probe		SEV <sup>2</sup>	
Add a mechanical float stop on sensor tube		FS	
Sensor special		SEZ	
<b>Device Identification Plate</b>			
Add stainless steel hang tag, custom markings 4 lines, 22 characters per line			TS
Other tagging special			TZ

<sup>1</sup> R1 and W1 probes only

<sup>2</sup> C1, C2, C3 and C4 sensors already include vapor seals. This option applies to rigidid probes only. Option is not available on W3 and W7 sensors.

The following codes behind the hyphen (-) are options which affect the construction and tagging of the transmitter.

# LMT100

## Magnetostrictive level transmitter

### Example of Code:

**LMT100.M1.S6.R1.A1.P1.NT.B.N.S6.D1.L2.H1.51B.99Z - SER.TS.AR // CN.R5.M5 IL=1234.12mm**

The following codes behind the hyphen (-) are options which affect the construction and tagging of the transmitter.

Options (continued)						
<b>LMT100 Insertion Transmitter</b> LMT100.....x-xxx.xx	xx	xx	xx(x)	xx	xxx	xx
<b>Electrical Connector Type</b>						
M20 stainless steel adapter	U8					
M20 brass adapter	U9					
Electrical Connector Special	UZ					
<b>Surge Protector</b>						
Surge / Transient Protector		S1				
<b>Special Other</b>						
Transmitter special option			STT			
Special paint or treatment on housing			STH			
Special paint or treatment on flange			STF			
Nuclear use, device to be used in a nuclear facility (application must be reviewed by ABB)			P4			
Special			PZ			
<b>Cleaning Services</b>						
Degreased (oil and grease free) for oxygen or chlorine service				P1		
Silicone-free design				P7		
<b>Tower Length Extension</b>						
Tower length extension 1 - meter insulation capability					TE1	
Tower length extension 2 - meter insulation capability					TE2	
Tower length extension special length - meter insulation capability					TEZ	
<b>Repeat Indicator (for two analog level outputs)</b>						
RI100 remote indicator (HART only), requires additional 4 ... 20 mA loop, same material as transmitter housing						AR

All codes located behind the // are for additional requirements and order comments. These codes will not be included on the device tag.

# LMT100

## Magnetostrictive level transmitter

### Example of Code:

**LMT100.M1.S6.R1.A1.P1.NT.B.N.S6.D1.L2.H1.51B.99Z - SER.TS.AR // CN.R5.M5 IL=1234.12mm**

**All codes located behind the // are for additional requirements and order comments. These codes will not be included on the device tag.**

Additional Order Requirements and Order Comments		
<b>LMT100.....x- ...//xx.xxx...</b>	xx(x)	xxx
<b>Certificates</b>		
Declaration of compliance with the order 2.1 acc. EN 10204	C4	
Test report 2.2 acc. EN 10204	C1	
MTR 3.1, Material monitoring with inspection certificate 3.1 acc. EN 10204	C2	
MTR 3.2, Material monitoring with inspection certificate 3.2 acc. EN 10204	C3	
With dye penetrant test on pressure bearing parts.	C9	
Material monitoring NACE MR 0175, MR 0103 with inspection certificate 3.1 acc. EN 10204	CN	
PMC Positive Material Identification with carbon content	CHC	
PMI Positive Material Identification without carbon content	CHD	
Other certificates	CZ	
<b>Drawings</b>		
Drawings for approval required prior to construction		GD1
Drawings for record required		GD2
Certified as built drawings required		GD3
Other drawings		GDZ

**All codes located behind the // are for additional requirements and order comments. These codes will not be included on the device tag.**

# LMT100

## Magnetostrictive level transmitter

### Example of Code:

**LMT100.M1.S6.R1.A1.P1.NT.B.N.S6.D1.L2.H1.51B.99Z - SER.TS.AR // CN.R5.M5 IL=1234.12mm**

**All codes located behind the // are for additional requirements and order comments. These codes will not be included on the device tag.**

Additional Order Requirements and Order Comments (Continued)		
<b>LMT100.....X- ...//xx.xxx...</b>	xx	xx
<b>Documentation Language (installation, operation and maintenance manual)</b>		
German	M1	
Italian	M2	
Spanish	M3	
French	M4	
English	M5	
Chinese	M6	
Portuguese	MA	
Russian	MB	
Others	MZ	
<b>Calibration &amp; Configuration</b>		
3-point calibration verification certificate, default values of 100, 50 and 0% of span, or customer specified points		R3
5-point calibration verification certificate, default values of 100, 75, 50, 25 and 0% of span, or customer specified points		R5
Custom Linearization or Strapping table entered (up to 20 points)		RL
Calibrate for two float application		RF
Witnessed calibration, with certificate		RW
Printed record of configured settings in transmitter		CG
Special calibration		RZ
<b>Special Other</b>		
Special		Z9

### Insertion length on LMT100

12345.12

### Insertion Length (IL)

Inches

xxxxx.xx IN

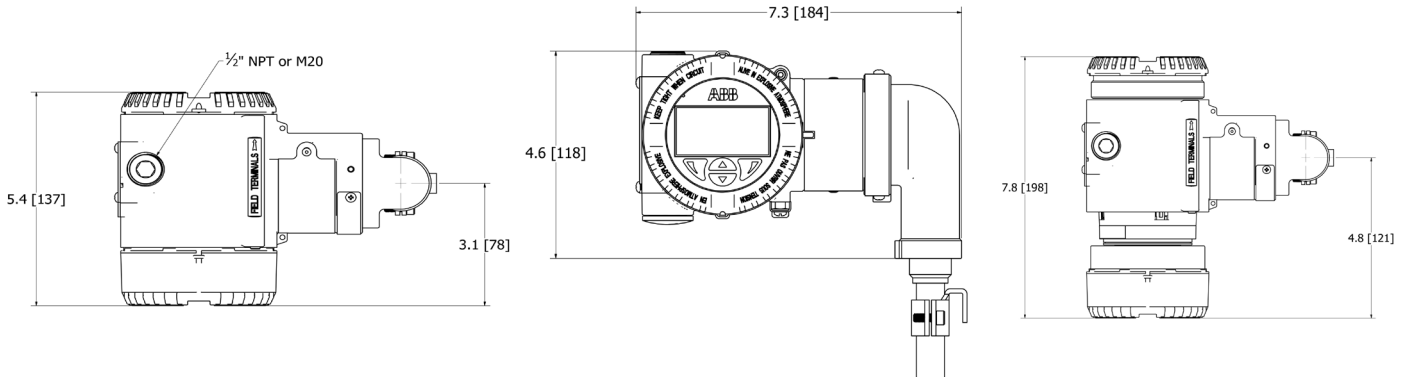
Millimeters

xxxxx.xx MM

# LMT100

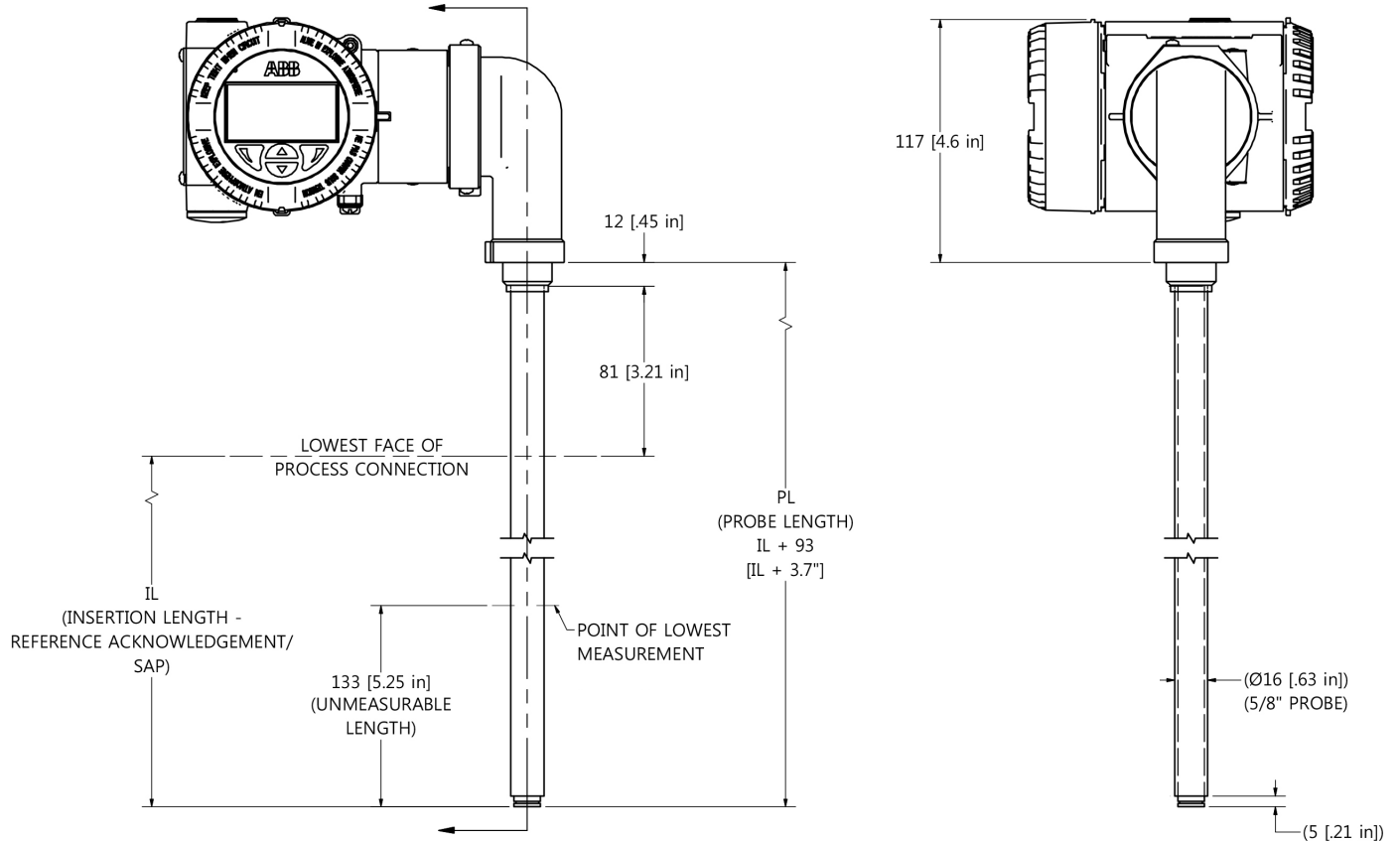
## Magnetostrictive level transmitter

### Enclosures



\*Drawings for Reference Only

### Probe Type R1, C1, H1

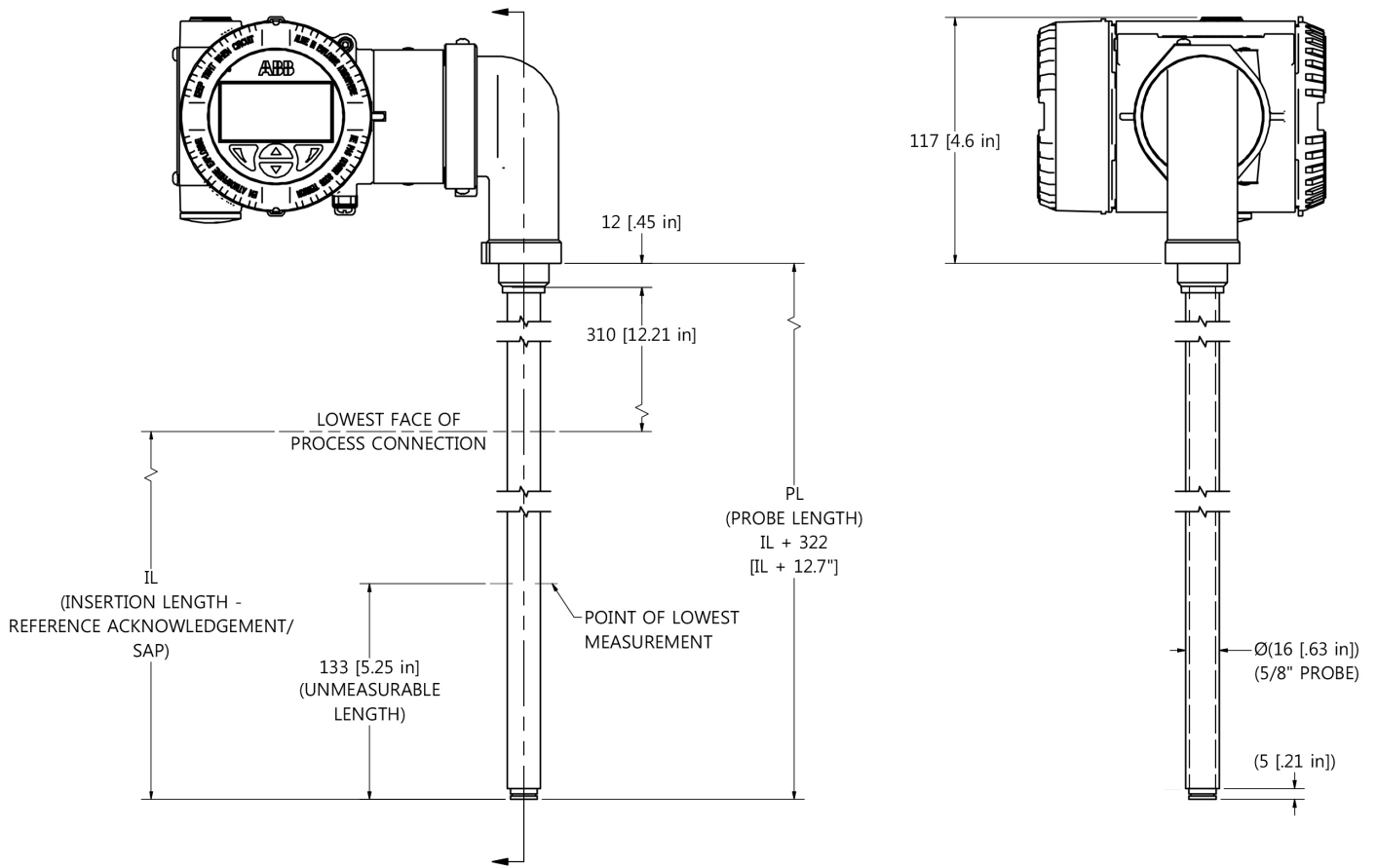


\*Drawings for Reference Only

# LMT100

## Magnetostrictive level transmitter

Probe Type R2, R3, C2, H2

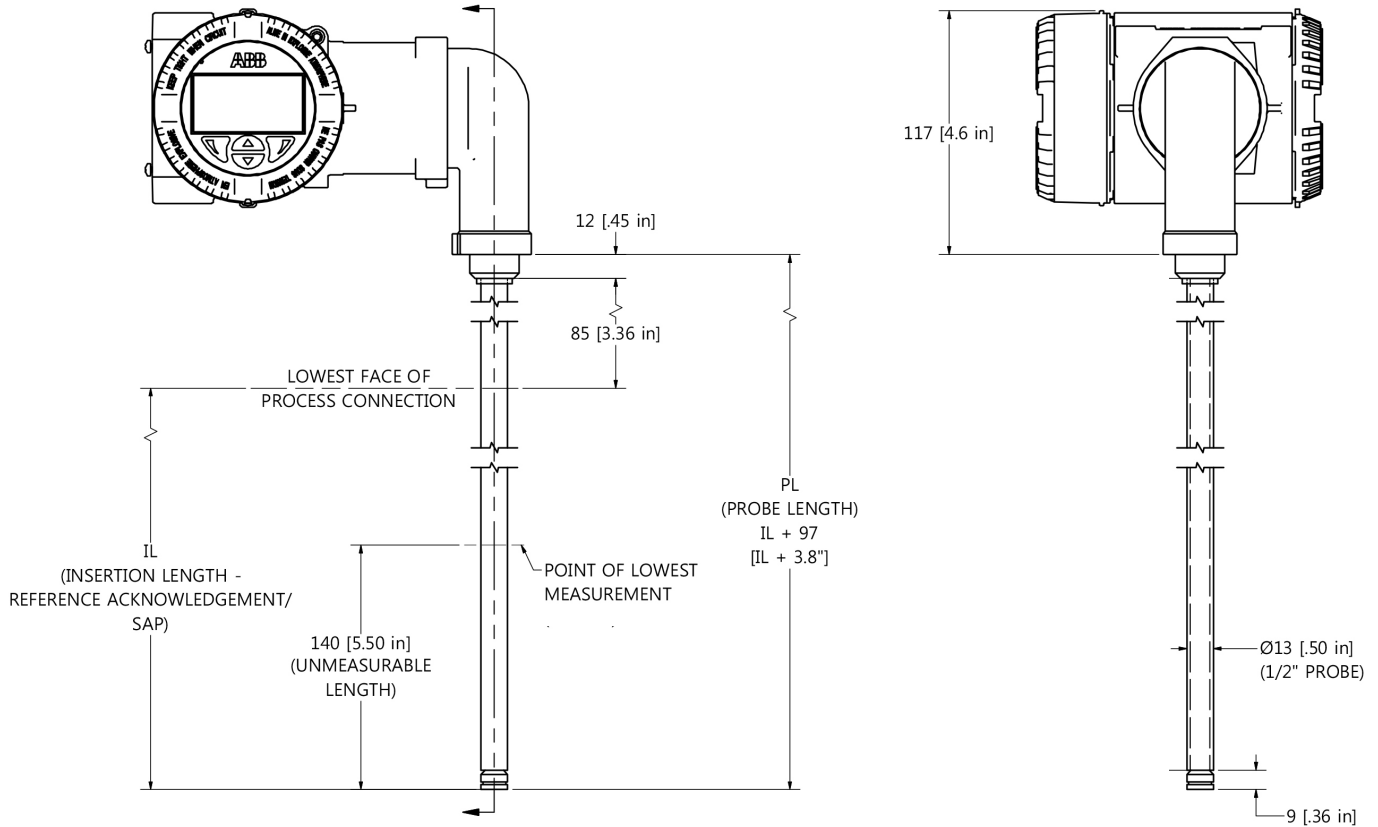


\*Drawings for Reference Only

# LMT100

## Magnetostrictive level transmitter

### Probe Type R4

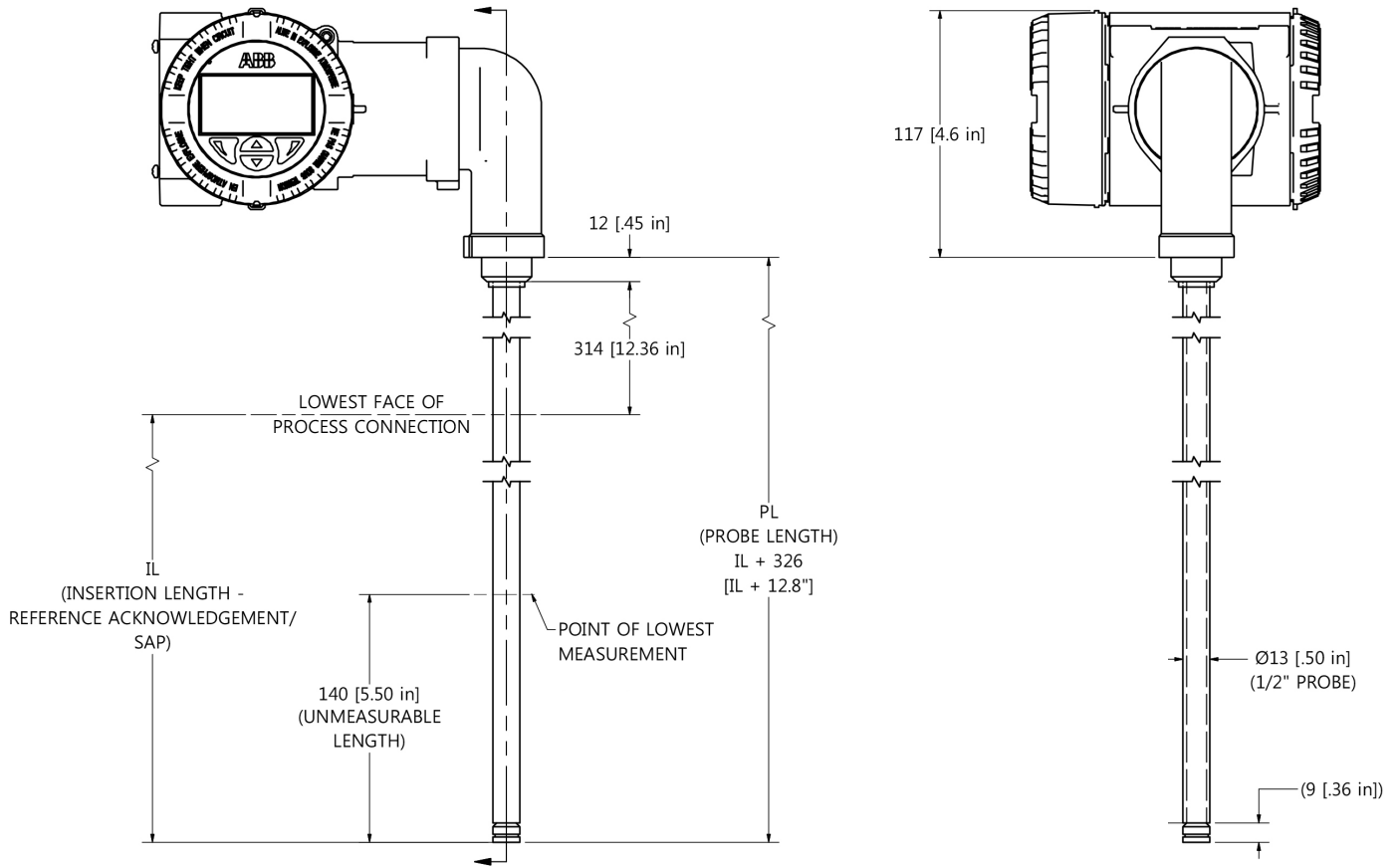


\*Drawings for Reference Only

# LMT100

## Magnetostrictive level transmitter

### Probe Type R5

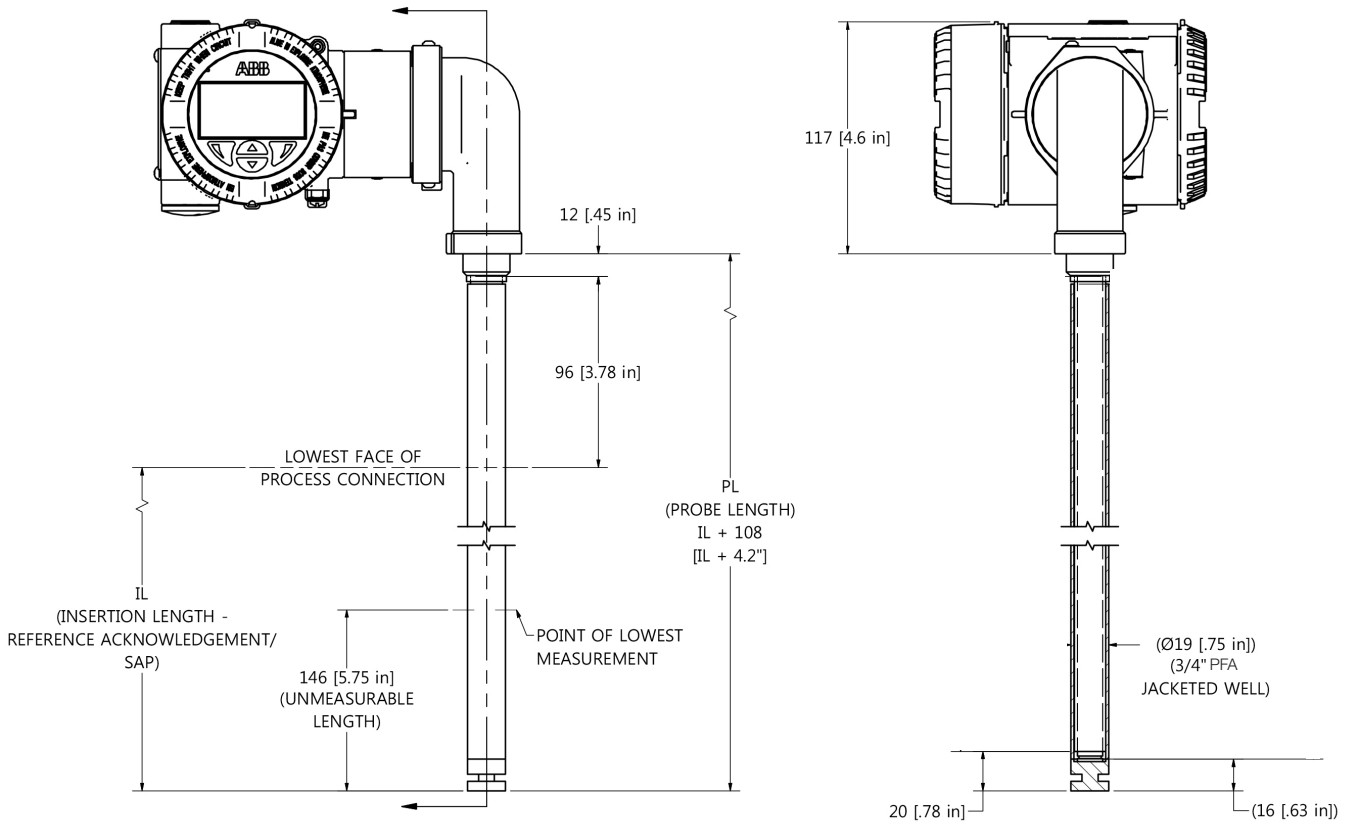


\*Drawings for Reference Only

# LMT100

## Magnetostrictive level transmitter

### Probe Type J1

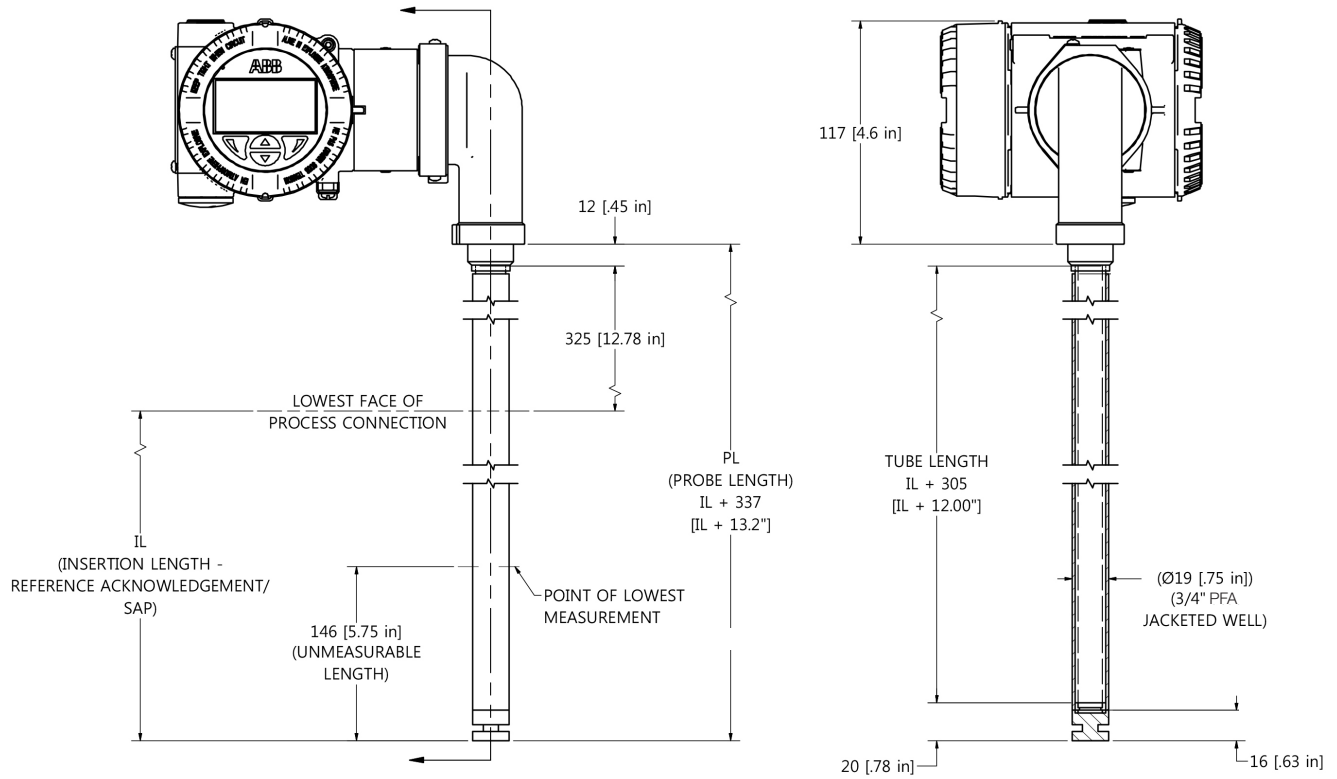


\*Drawings for Reference Only

# LMT100

## Magnetostrictive level transmitter

### Probe Type J2

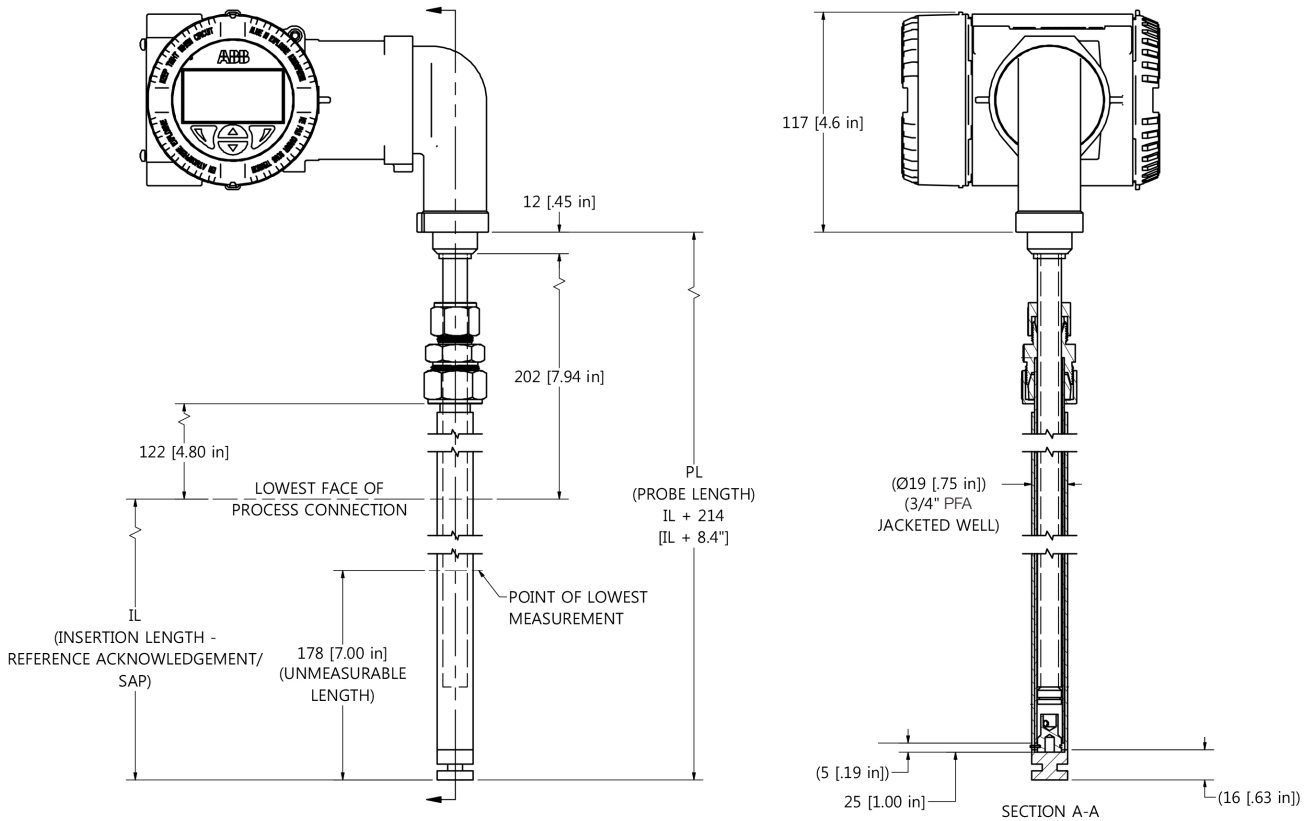


\*Drawings for Reference Only

# LMT100

## Magnetostrictive level transmitter

### Probe Type J4, J5

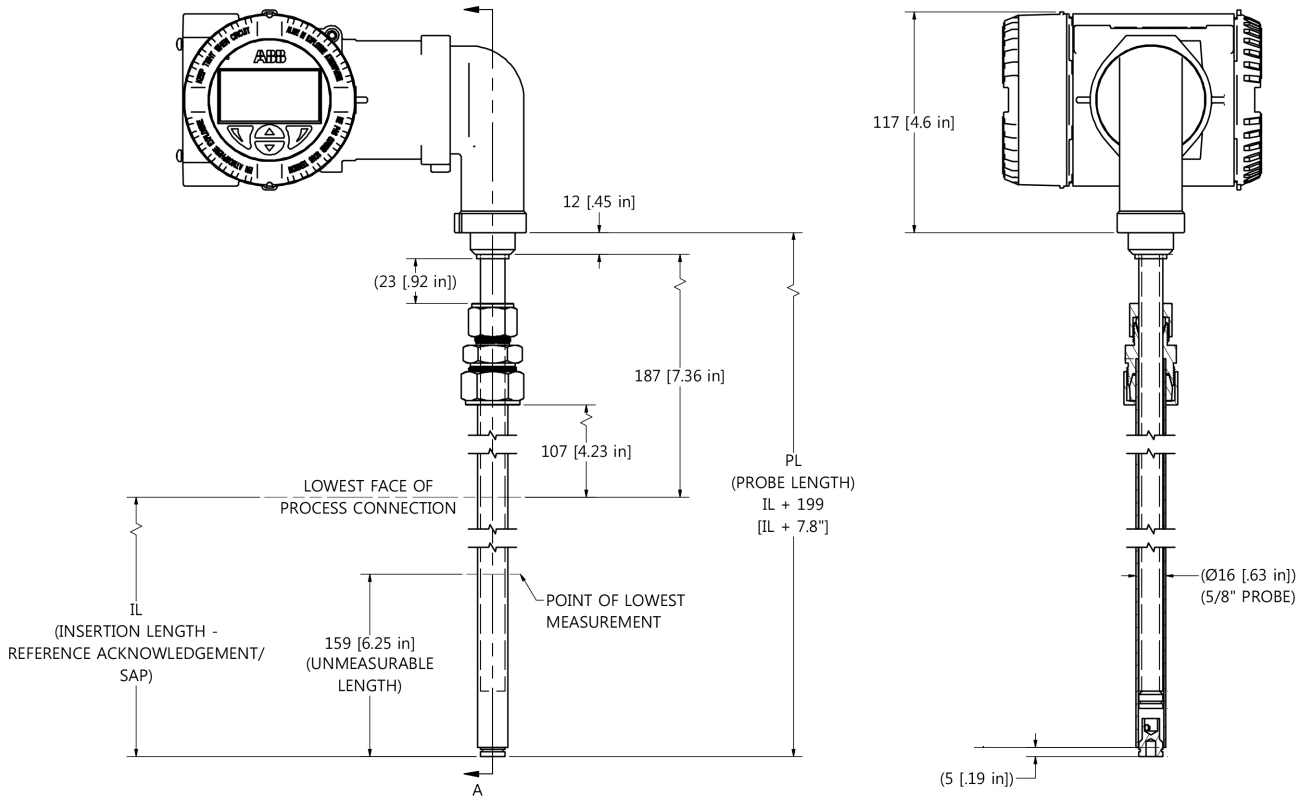


\*Drawings for Reference Only

# LMT100

## Magnetostrictive level transmitter

### Probe Type W1

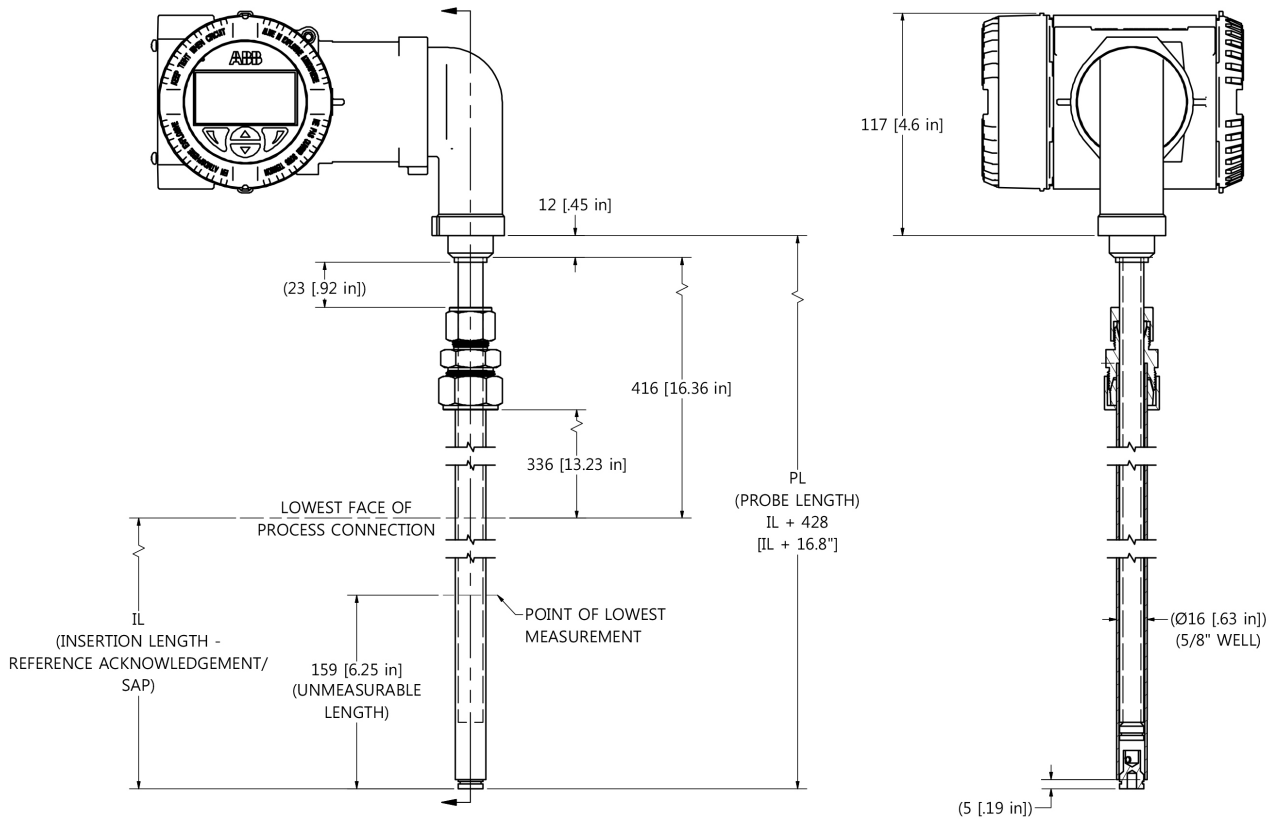


\*Drawings for Reference Only

# LMT100

## Magnetostrictive level transmitter

### Probe Type W2

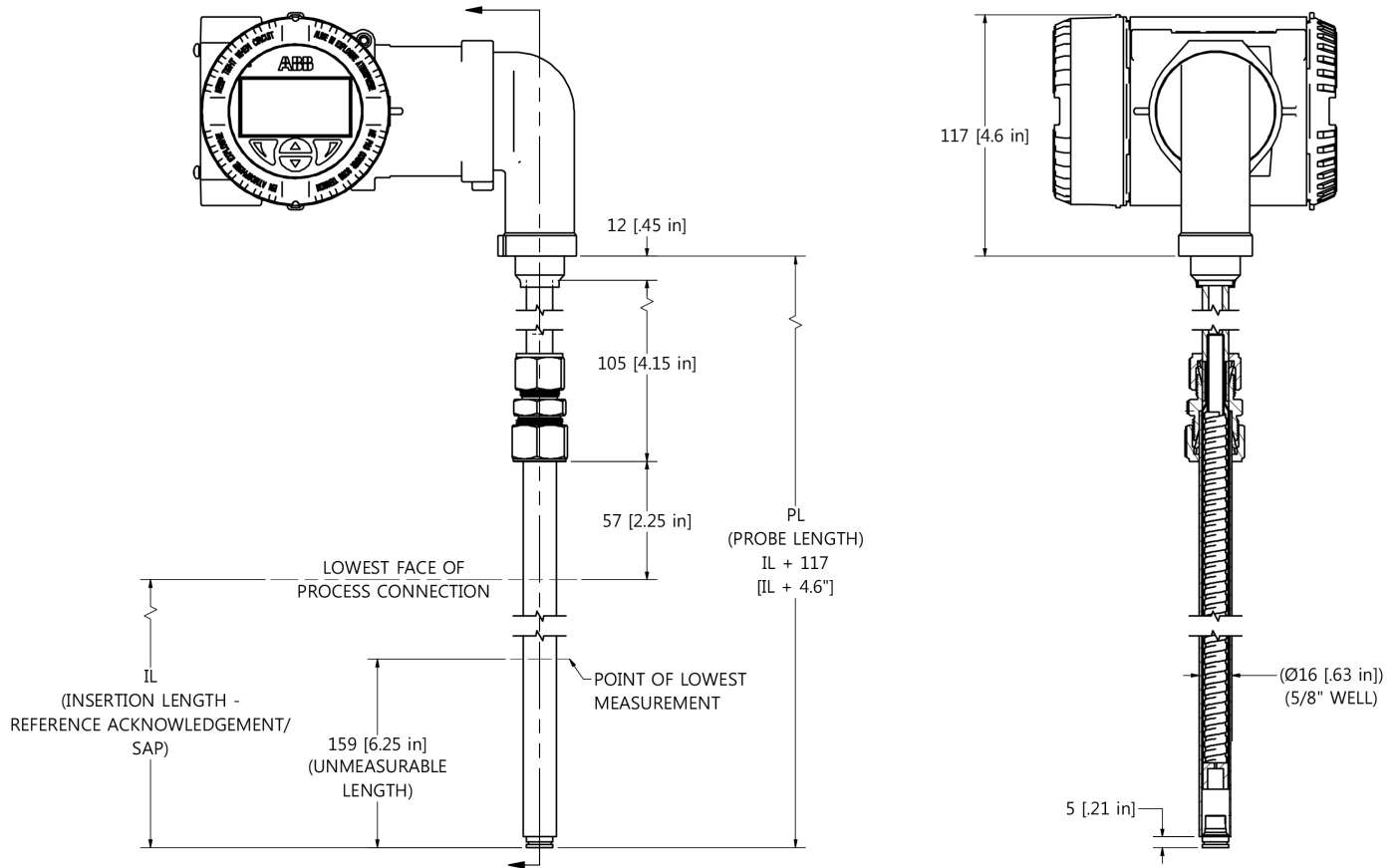


\*Drawings for Reference Only

# LMT100

## Magnetostrictive level transmitter

### Probe Type W3

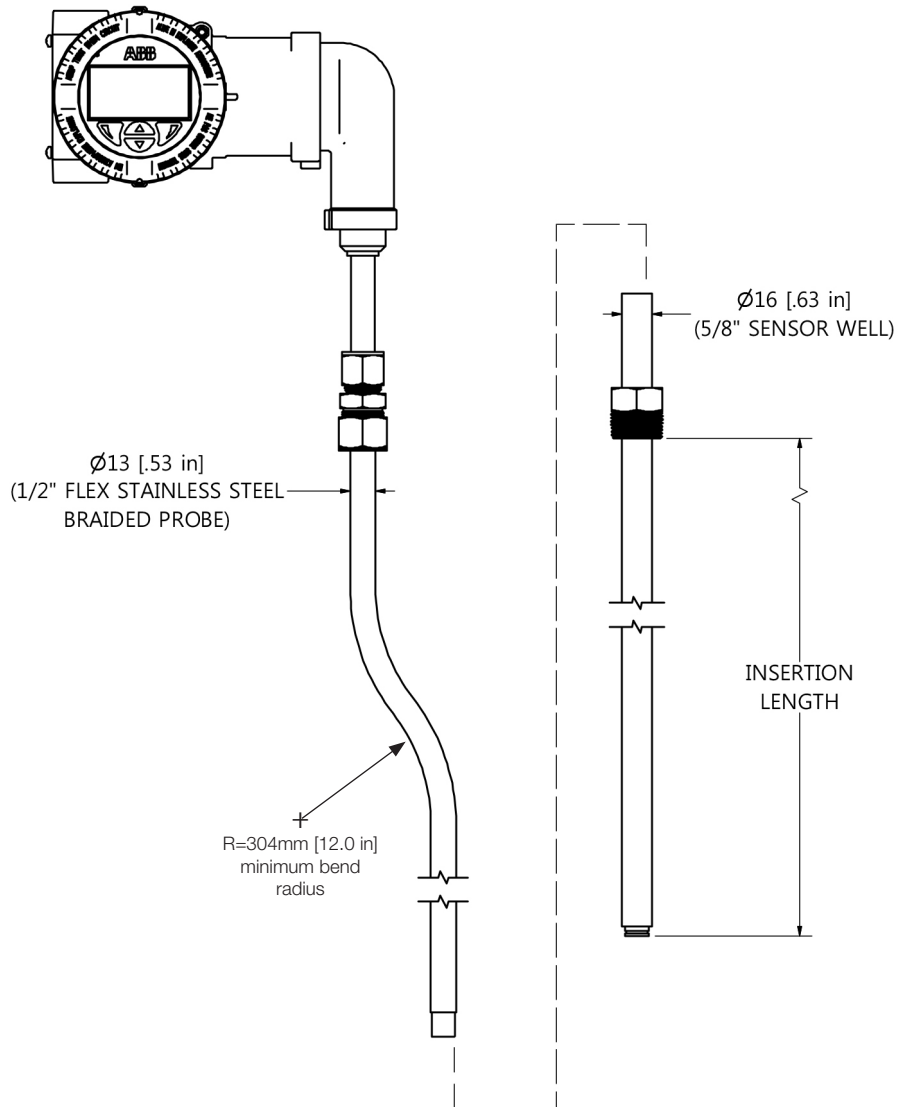


\*Drawings for Reference Only

# LMT100

## Magnetostrictive level transmitter

### W3 Well with Probe (continued)

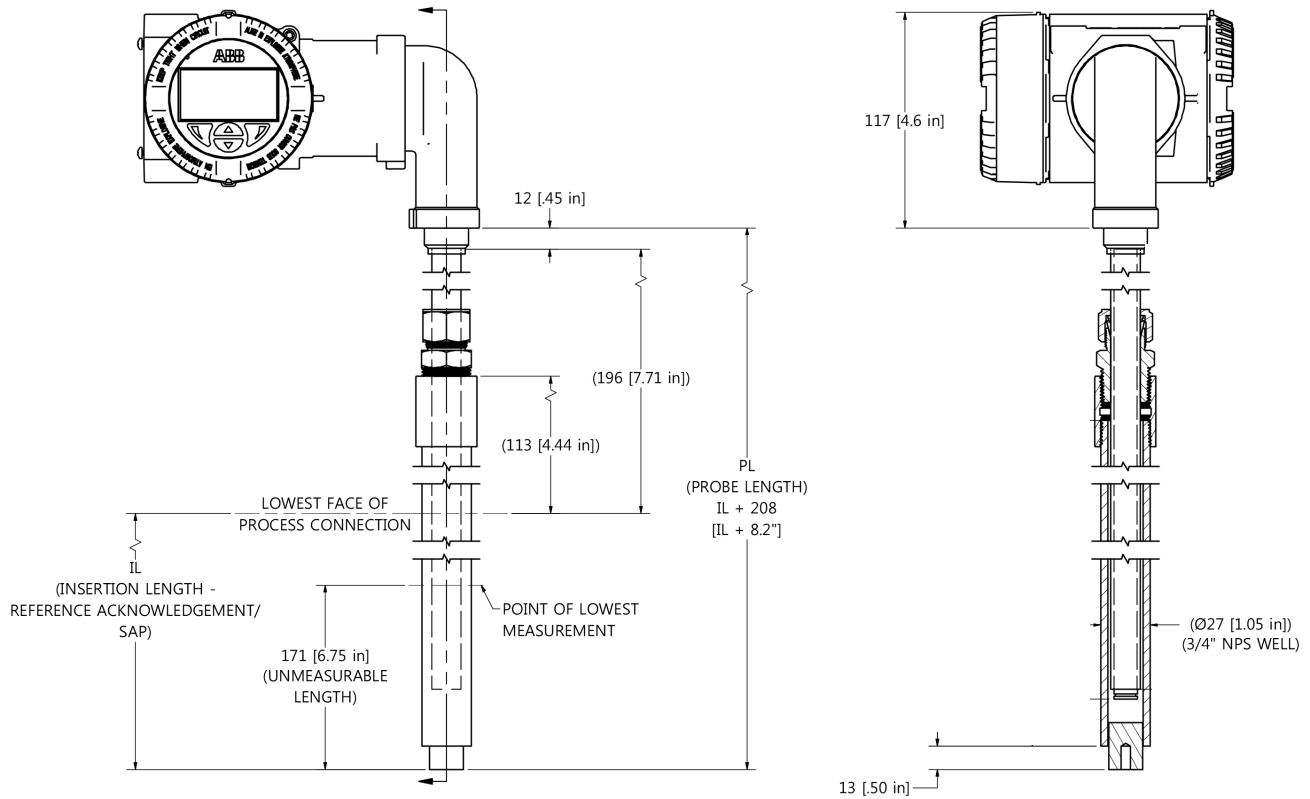


\*Drawings for Reference Only

# LMT100

## Magnetostrictive level transmitter

### Probe Type C3, W4

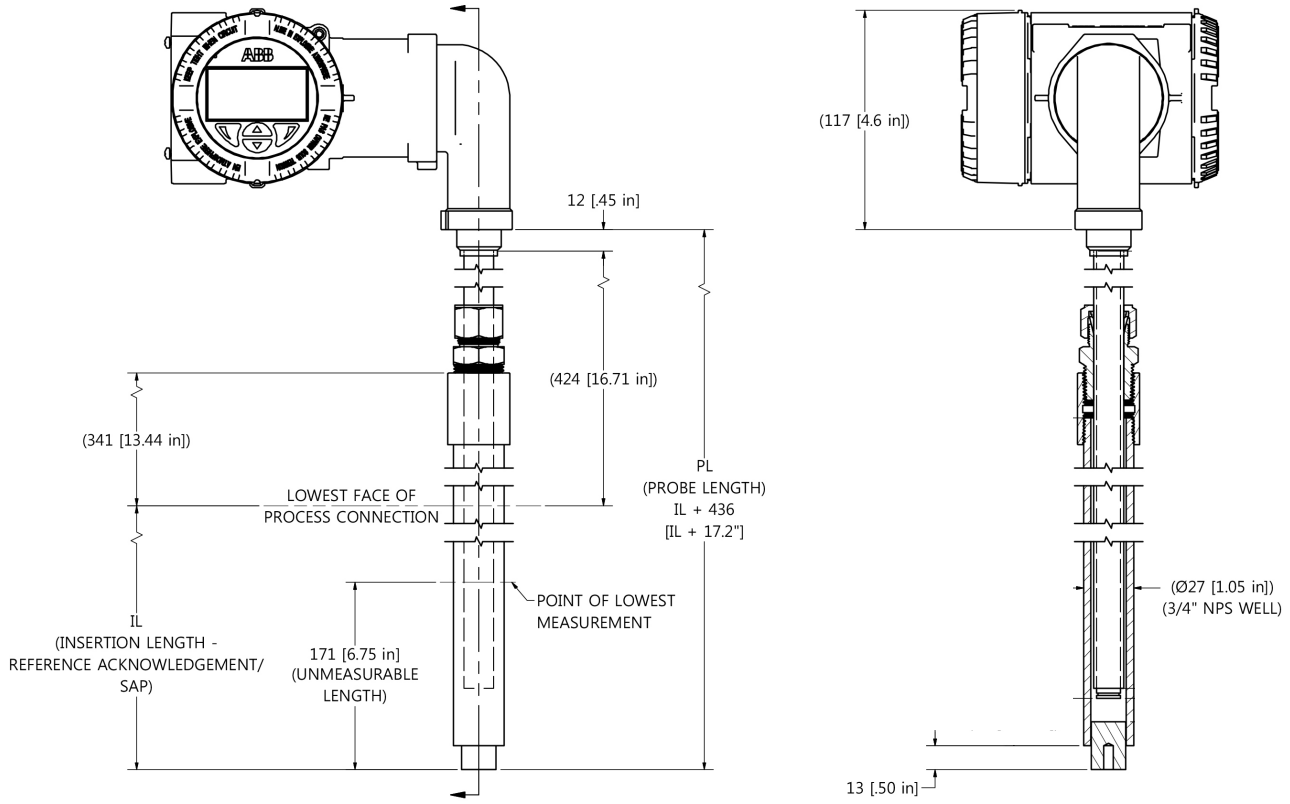


\*Drawings for Reference Only

# LMT100

## Magnetostrictive level transmitter

### Probe Type C4, W5, W6

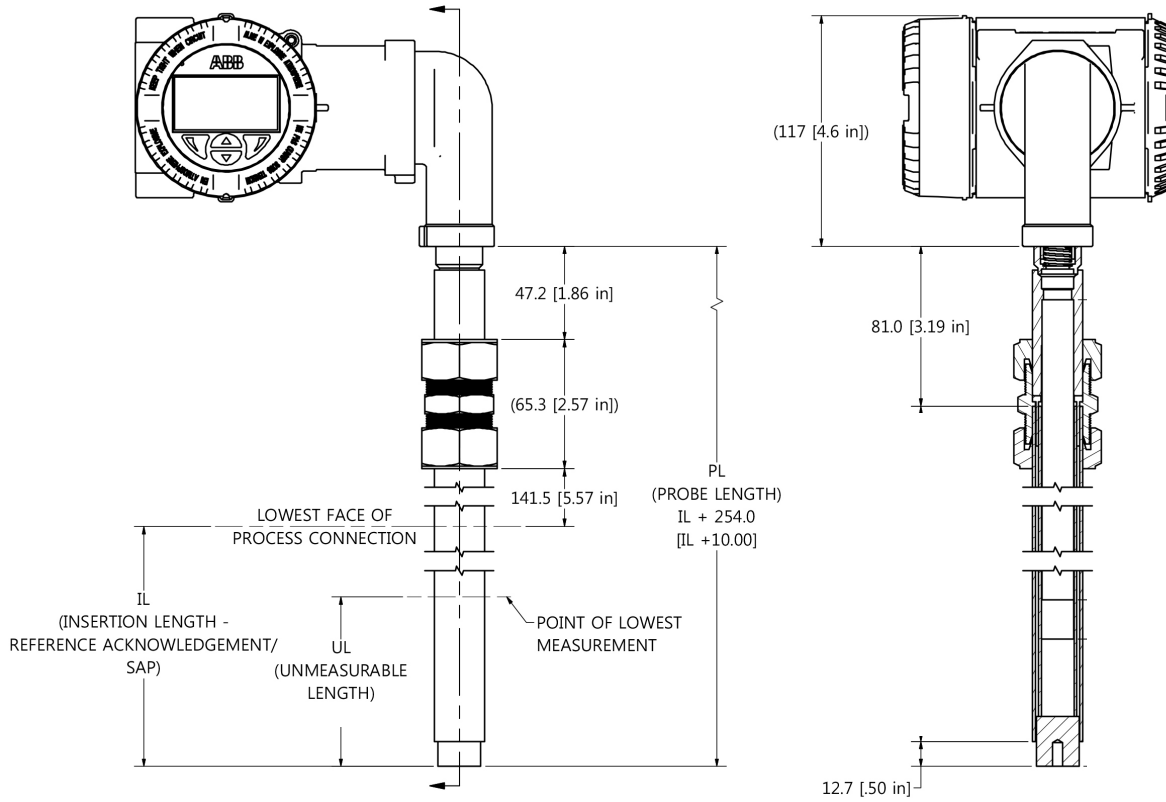


\*Drawings for Reference Only

# LMT100

## Magnetostrictive level transmitter

### Probe Type W7

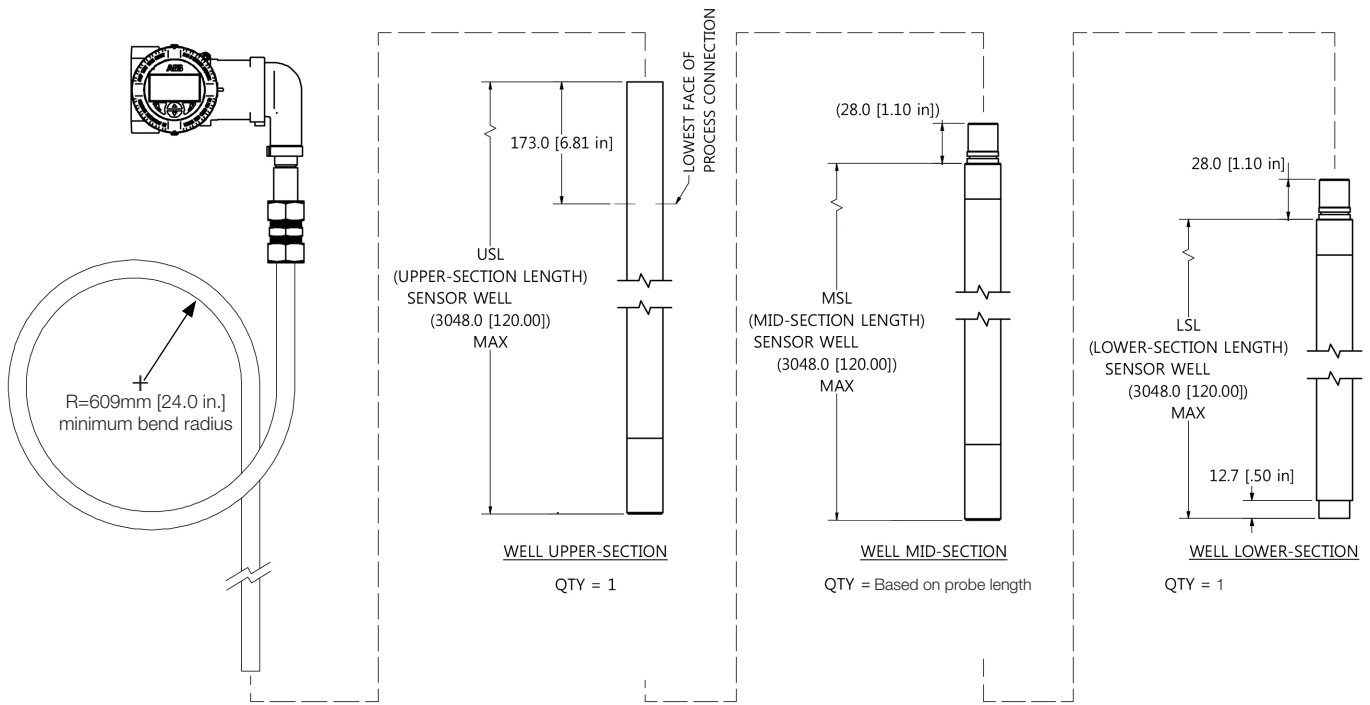


\*Drawings for Reference Only

# LMT100

## Magnetostrictive level transmitter

### Probe Type W7 (continued)



\*Drawings for Reference Only

# Contact us

## ABB Inc.

17100 Manchac Park Lane  
Baton Rouge, LA 70817 USA  
Phone: +1 225 408 0800  
Service: +1 225 408 0898  
Fax: +1 225 408 0899  
Service e-mail: [ktek-service@us.abb.com](mailto:ktek-service@us.abb.com)

## ABB Engineering (Shanghai) Ltd.

No. 5, Lane 369, Chuangye Road  
Kangqiao Town, Pudong District  
Shanghai, 201319, P.R. China  
Phone: +86 10 64231407  
Service: +86 21 61056421  
Fax: +86 10 64371913  
E-mail: [shan.li@cn.abb.com](mailto:shan.li@cn.abb.com)  
Service e-mail: [rola.li@cn.abb.com](mailto:rola.li@cn.abb.com)

[www.abb.com/level](http://www.abb.com/level)

# SEITA

Soluciones en Instrumentación,  
Automatización y Control Industrial

[www.seita.com.co](http://www.seita.com.co)

## Note

We reserve the right to make technical changes or modify the contents of this document without prior notice. With regard to purchase orders, the agreed particulars shall prevail. ABB does not accept any responsibility whatsoever for potential errors or possible lack of information in this document.

We reserve all rights in this document and in the subject matter and illustrations contained therein. Any reproduction, disclosure to third parties or utilization of its contents - in whole or in parts - is forbidden without prior written consent of ABB.

Copyright© 2016 ABB  
All rights reserved

3KXL141100R1001



Sales



Service

DS/LMT100-EN A\_12\_2016